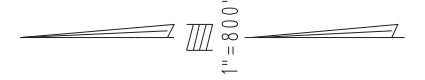


THIS MAP IS FOR THE PURPOSE
OF AD VALOREM TAXATION ONLY.

Fractional Sec.7&18, T.2N.,R.8E., S.B.B.&M.

Morongo Unified
Tax Rate Area
94001

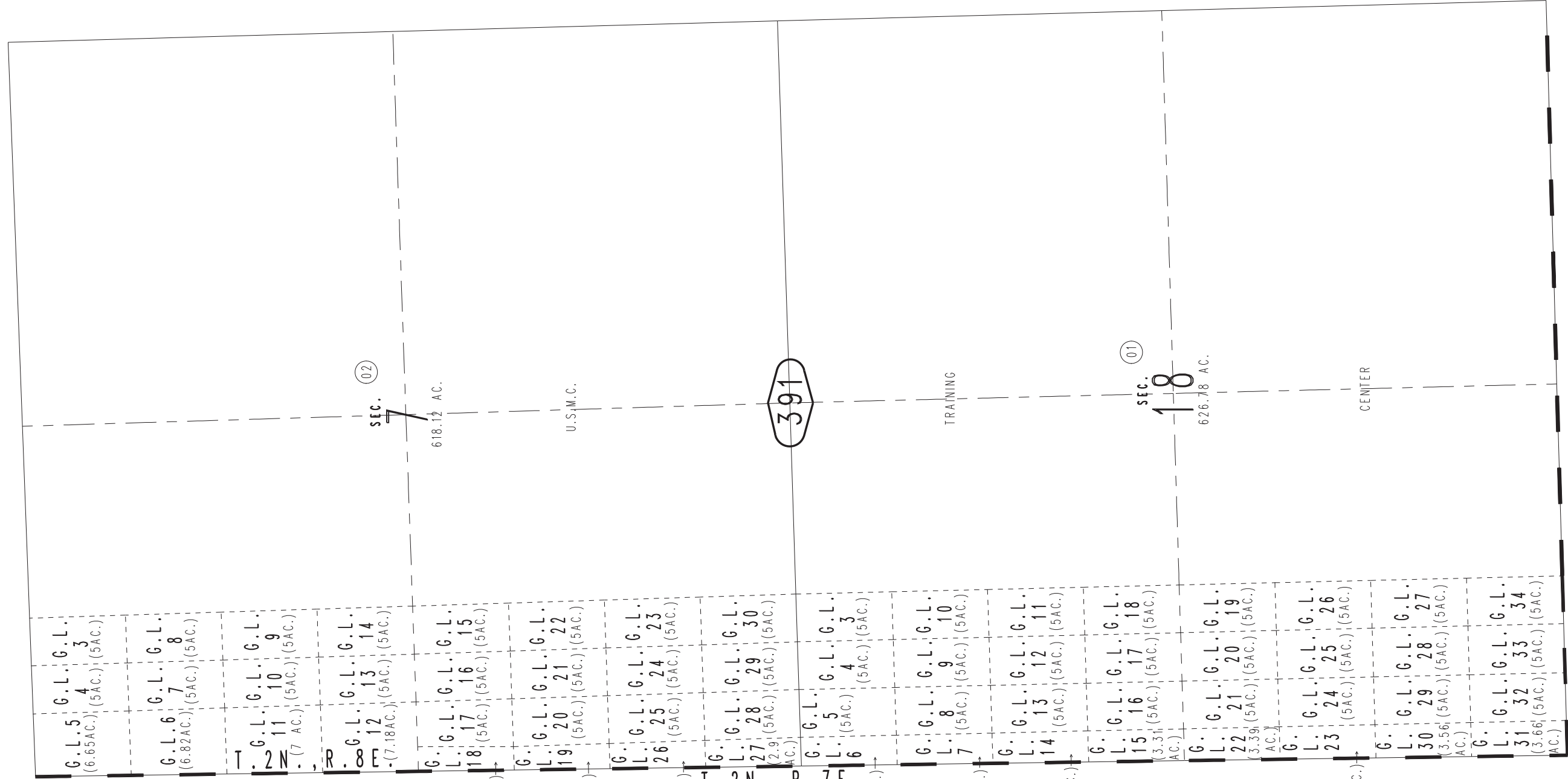
0633-39



38

36

06



sec. 7

391

sec. 18

18

618.12 AC.

626.78 AC.

G.L. 5
(6.65 AC.)

G.L. 6
(6.82 AC.)

G.L. 7
(7 AC.)

G.L. 8
(7.18 AC.)

G.L. 9
(5.35 AC.)

G.L. 10
(5.54 AC.)

G.L. 11
(2.72 AC.)

G.L. 12
(2.54 AC.)

G.L. 13
(2.72 AC.)

G.L. 14
(2.9 AC.)

G.L. 15
(3.04 AC.)

G.L. 16
(3.13 AC.)

G.L. 17
(3.22 AC.)

G.L. 18
(3.39 AC.)

G.L. 19
(3.56 AC.)

G.L. 20
(3.66 AC.)

G.L. 21
(5.35 AC.)

G.L. 22
(5.54 AC.)

G.L. 23
(2.72 AC.)

G.L. 24
(2.54 AC.)

G.L. 25
(2.72 AC.)

G.L. 26
(2.9 AC.)

G.L. 27
(3.04 AC.)

G.L. 28
(3.13 AC.)

G.L. 29
(3.22 AC.)

G.L. 30
(3.39 AC.)

G.L. 31
(3.56 AC.)

G.L. 32
(3.66 AC.)

G.L. 33
(5.35 AC.)

G.L. 34
(5.54 AC.)

0632
33