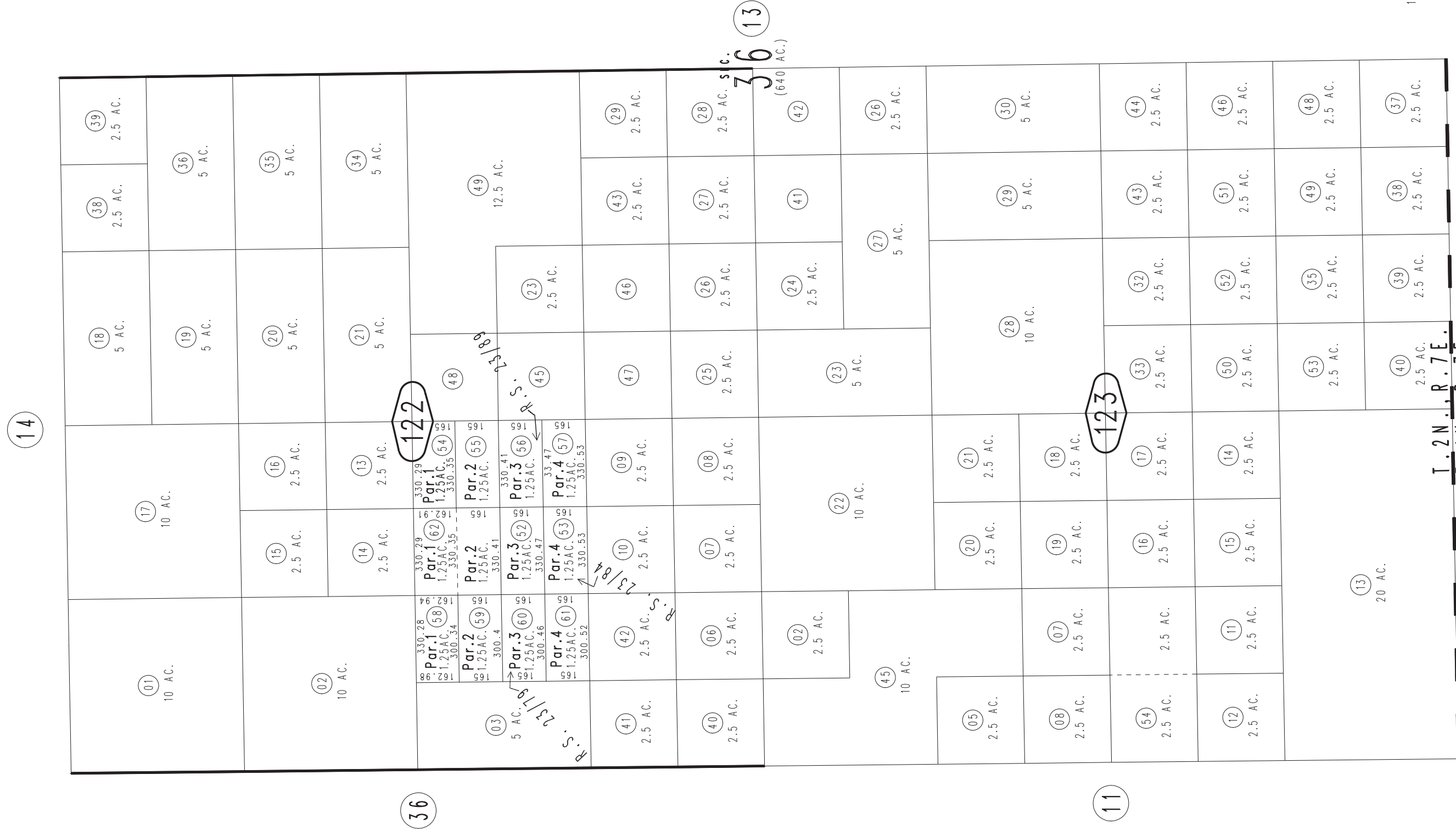
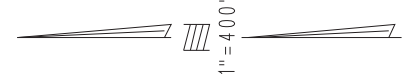


THIS MAP IS FOR THE PURPOSE OF AD VALOREM TAXATION ONLY.

W.1/2 Sec.36, T.2N.,R.7E., S.B.B.&M.

Morongo Unified Tax Rate Area 94042

0632-12



March 2005

R.S. 23/89
R.S. 23/84
R.S. 23/79

Assessor's Map
Book 0632 Page 12
San Bernardino County

REVISED
03/04/20 KA

0606
31