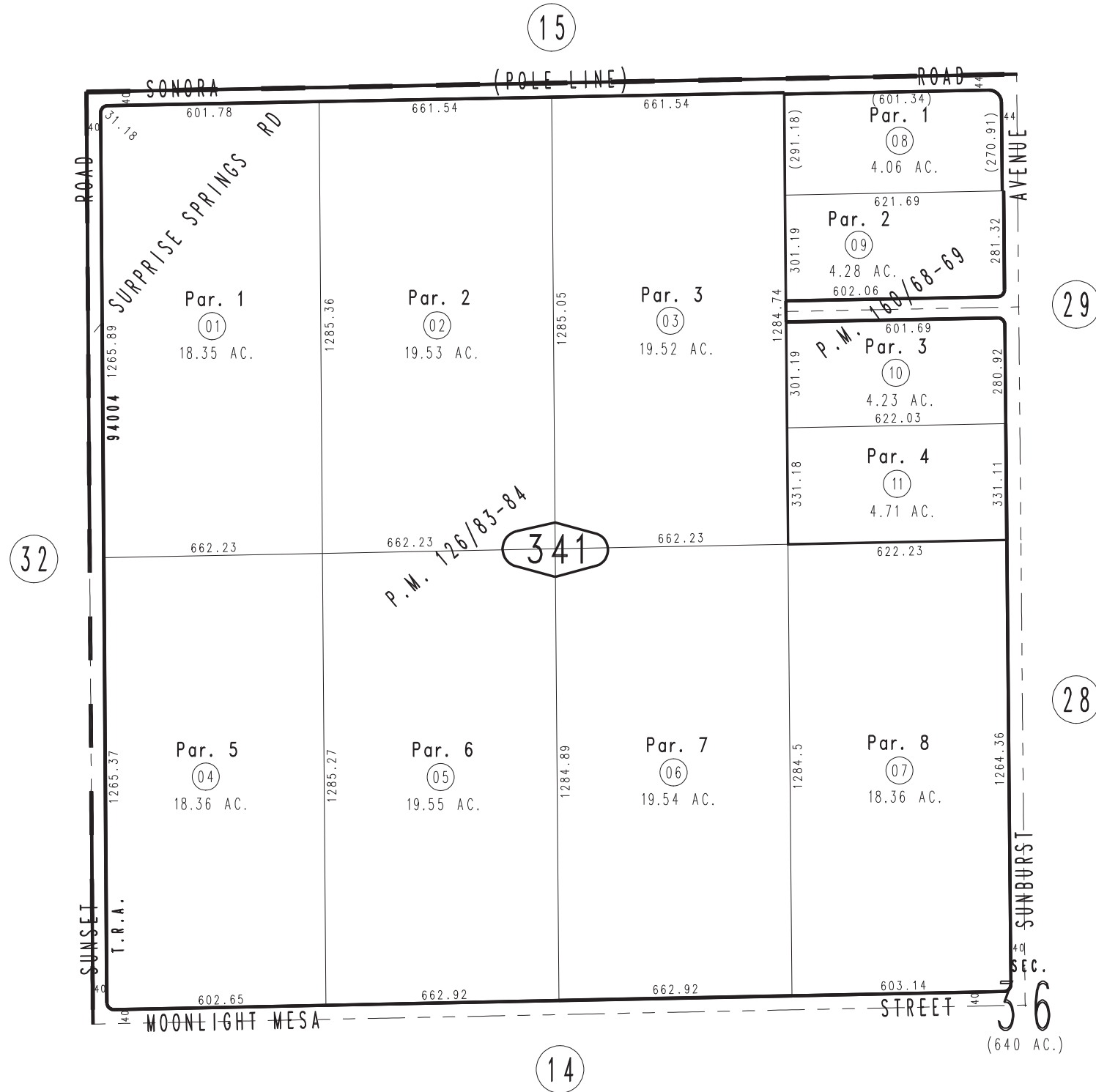
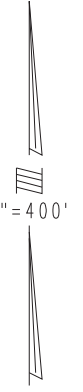


THIS MAP IS FOR THE PURPOSE
OF AD VALOREM TAXATION ONLY.

N.W.1/4 Sec.36, T.2N.,R.6E., S.B.B.&M.

Morongo Unified
Tax Rate Area
94107

0631 - 34



March 2005

Parcel Map No. 13205, P.M. 160/68-69
Ptn. Parcel Map No. 10619, P.M. 126/83-84

Assessor's Map
Book 0631 Page 34
San Bernardino County

REVISED
03/21/24 CA