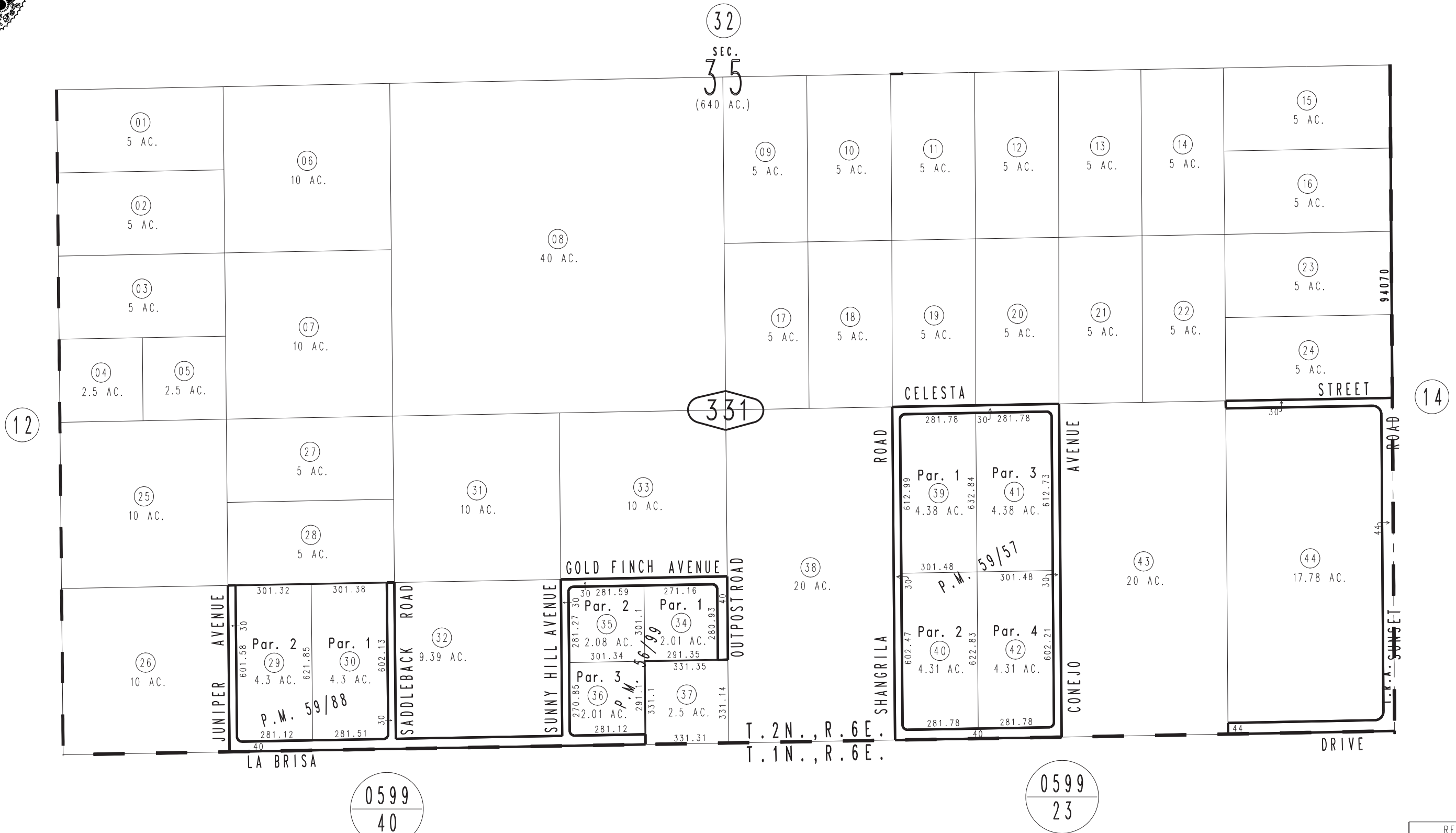
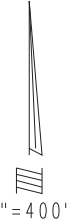


THIS MAP IS FOR THE PURPOSE OF AD VALOREM TAXATION ONLY.

S.1/2 Sec.35, T.2N.,R.6E., S.B.B.&M.

Morongo Unified Tax Rate Area 94070

0631 - 33



March 2005

Parcel Map No. 6356, P.M. 59/88  
Parcel Map No. 6259, P.M. 59/57  
Parcel Map No. 5970, P.M. 56/99

Assessor's Map  
Book 0631 Page 33  
San Bernardino County

REVISED  
08/03/12 RM-MC