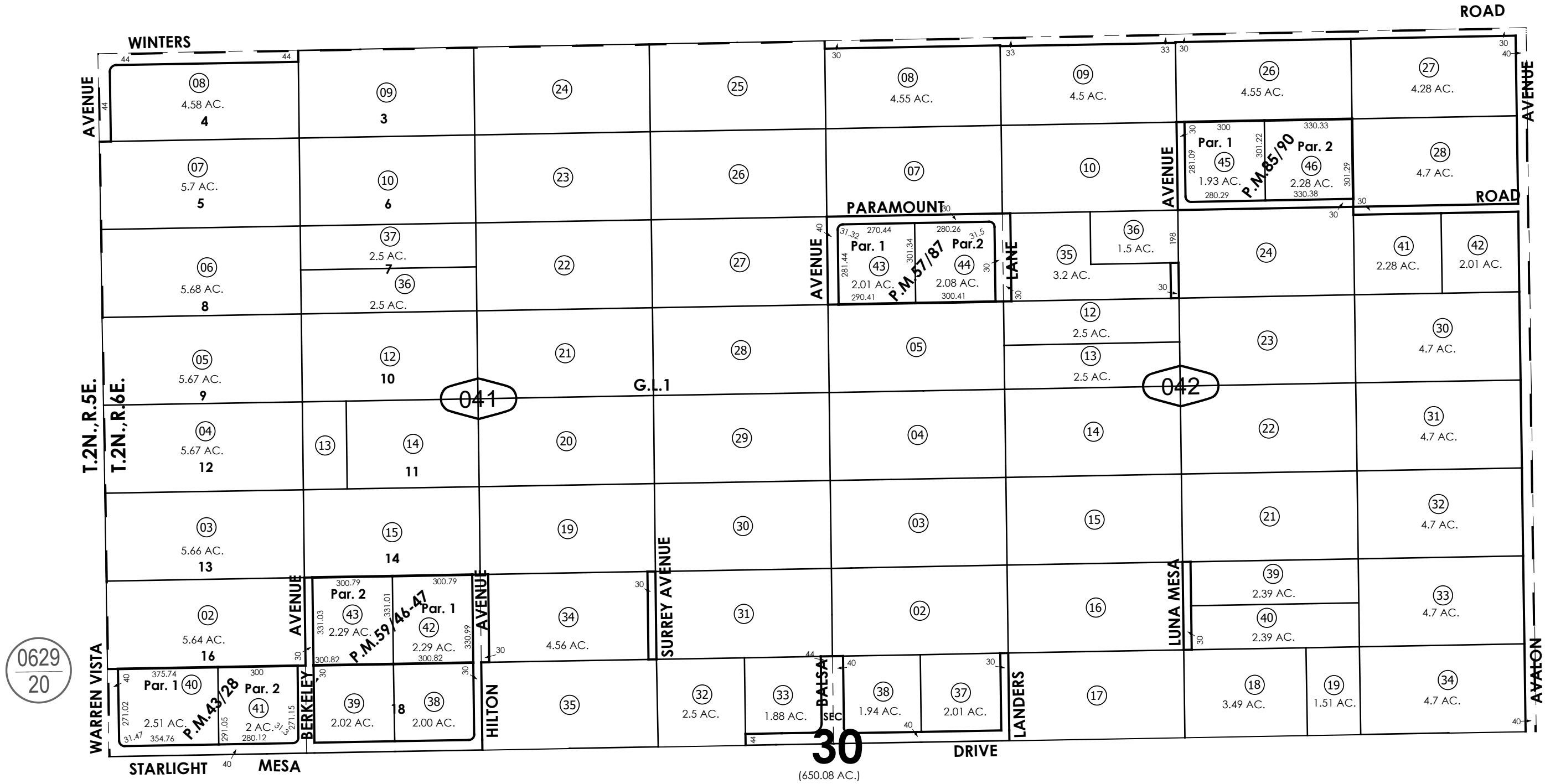


THIS MAP IS FOR THE PURPOSE OF AD VALOREM TAXATION ONLY.

N.1/2 Fractional Sec.30, T.2N.,R.6E., S.B.B.&M.

Morongo Unified Tax Rate Area 94044

0631 - 04



0629
20

08

03

Parcel Map No. 4730, P.M. 43/28
Parcel Map No. 5680, P.M. 57/87
Parcel Map No. 5734, P.M. 59/46-47
Parcel Map No. 8357, P.M. 85/90

March 2005

Assessor's Map
Book 0631 Page 04
San Bernardino County

REVISED
12/04/23 KA
12/19/25 XM