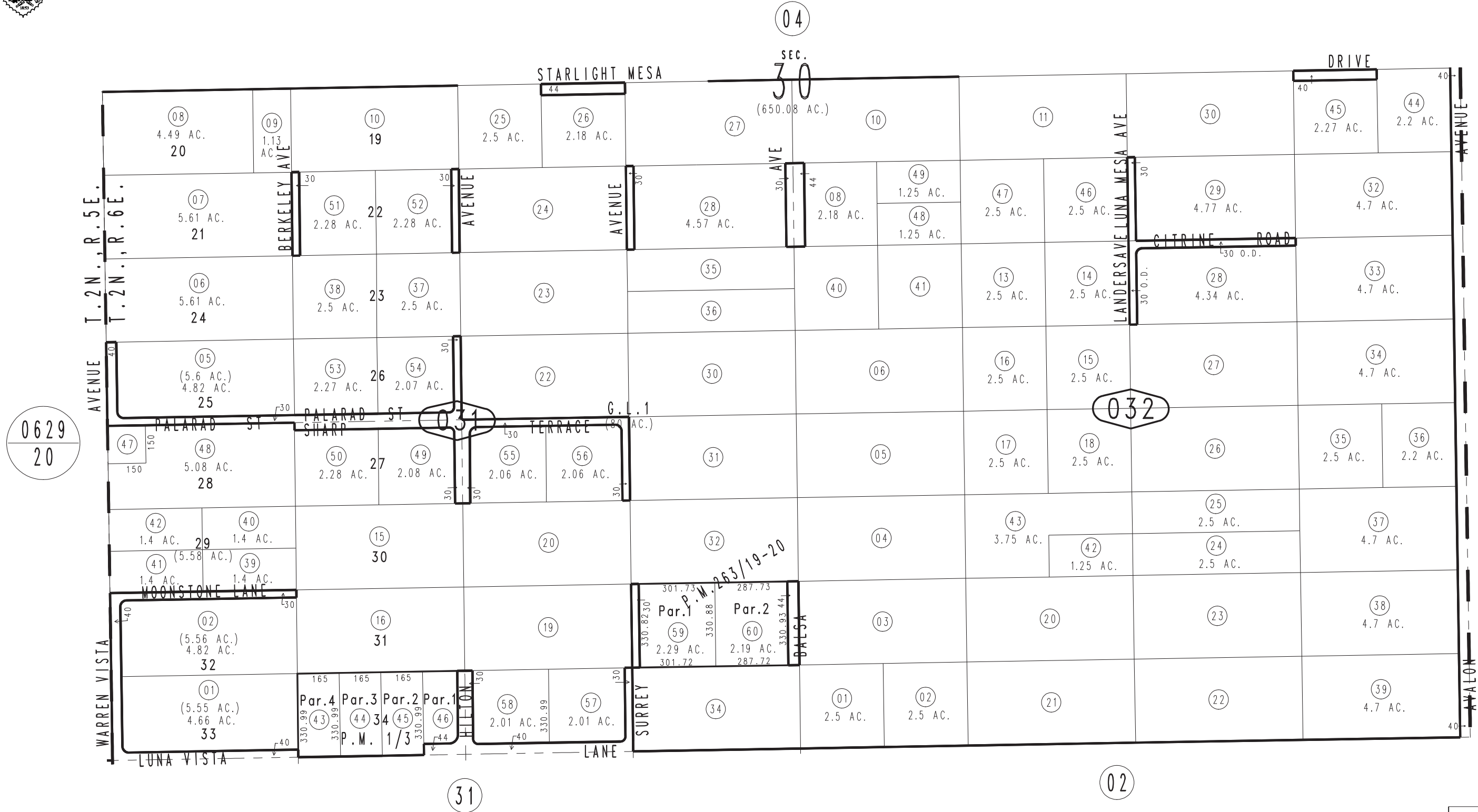
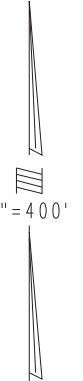


THIS MAP IS FOR THE PURPOSE OF AD VALOREM TAXATION ONLY.

S.1/2 Fractional Sec.30, T.2N.,R.6E., S.B.B.&M.

Morongo Unified Tax Rate Area 94044

0631 - 03



March 2005

Parcel Map No. 20601, P.M. 263/19-20
Parcel Map No. 3, P.M. 1/3

Assessor's Map
Book 0631 Page 03
San Bernardino County

REVISED
11/24/20 KA
03/09/21 KA
07/03/24 RU