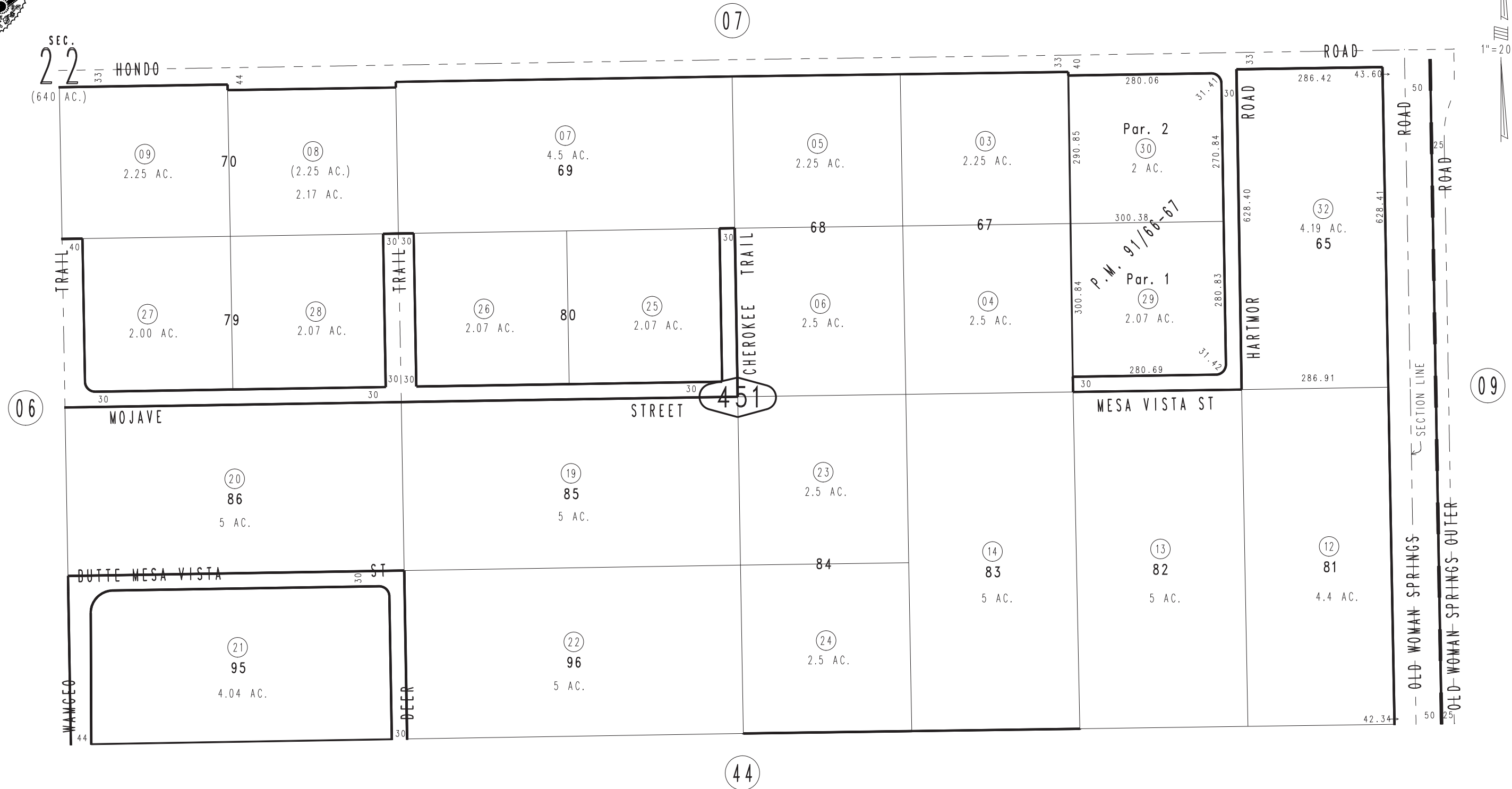


THIS MAP IS FOR THE PURPOSE OF AD VALOREM TAXATION ONLY.

N.1/2, S.E.1/4, Sec.22, T.2N.,R.5E., S.B.B.&M.

Morongo Unified Tax Rate Area 94077

0629 - 45



REVISED	
02/14/12	GW
02/15/12	GW
07/02/12	RM
10/02/12	GW
10/24/12	KA
10/30/12	LH