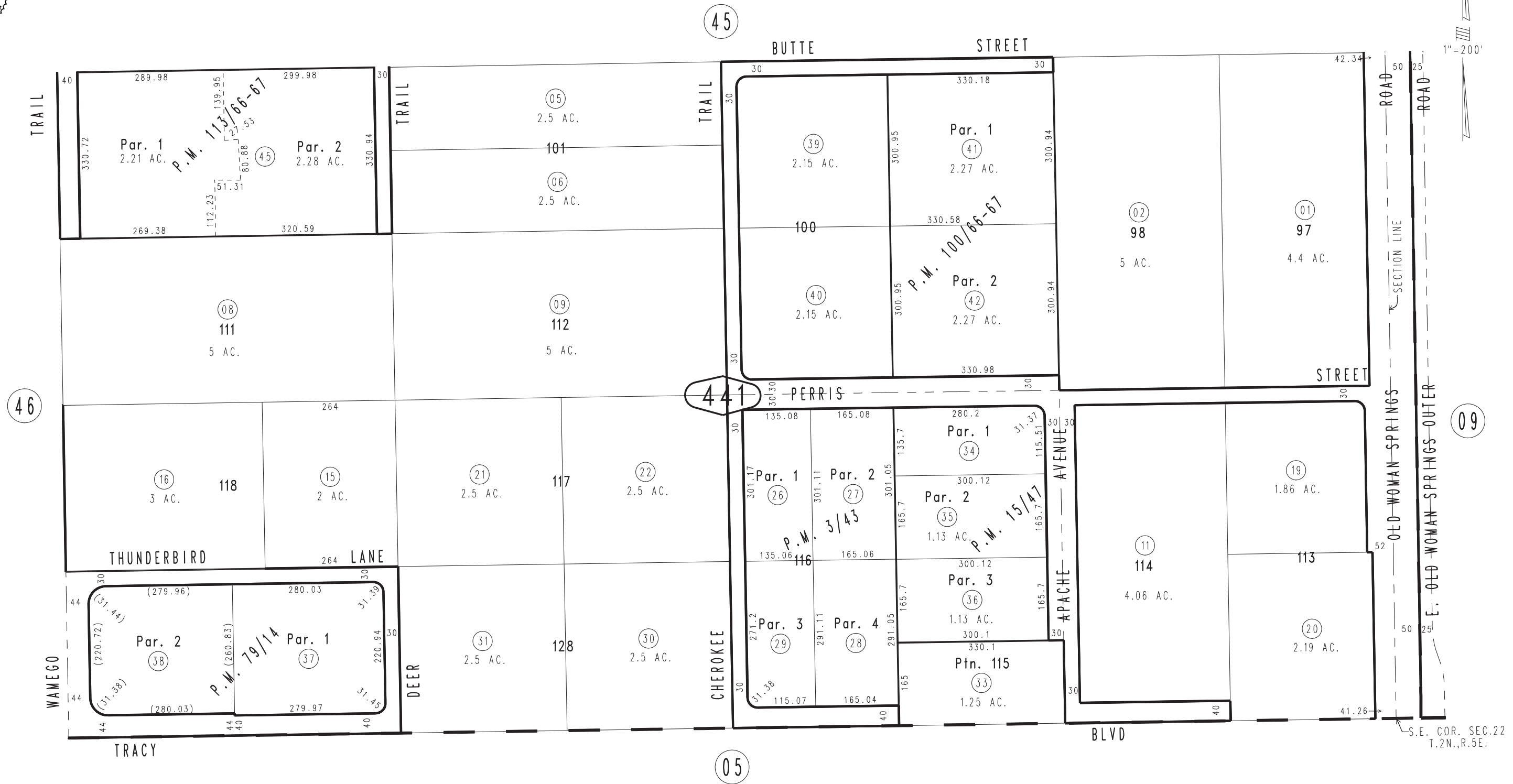


THIS MAP IS FOR THE PURPOSE OF AD VALOREM TAXATION ONLY.

S.1/2, S.E.1/4, Sec.22, T.2N.,R.5E., S.B.B.&M.

Morongo Unified Tax Rate Area 94077

0629 - 44



Parcel Map No. 10248, P.M. 113/66-67
 Parcel Map No. 8361, P.M. 100/66-67
 Parcel Map No. 7688, P.M. 79/14
 Parcel Map No. 1615, P.M. 15/47
 Parcel Map No. 310, P.M. 3/43

March 2005

Assessor's Map
 Book 0629 Page 44
 San Bernardino County

REVISED
 04/15/22 AP