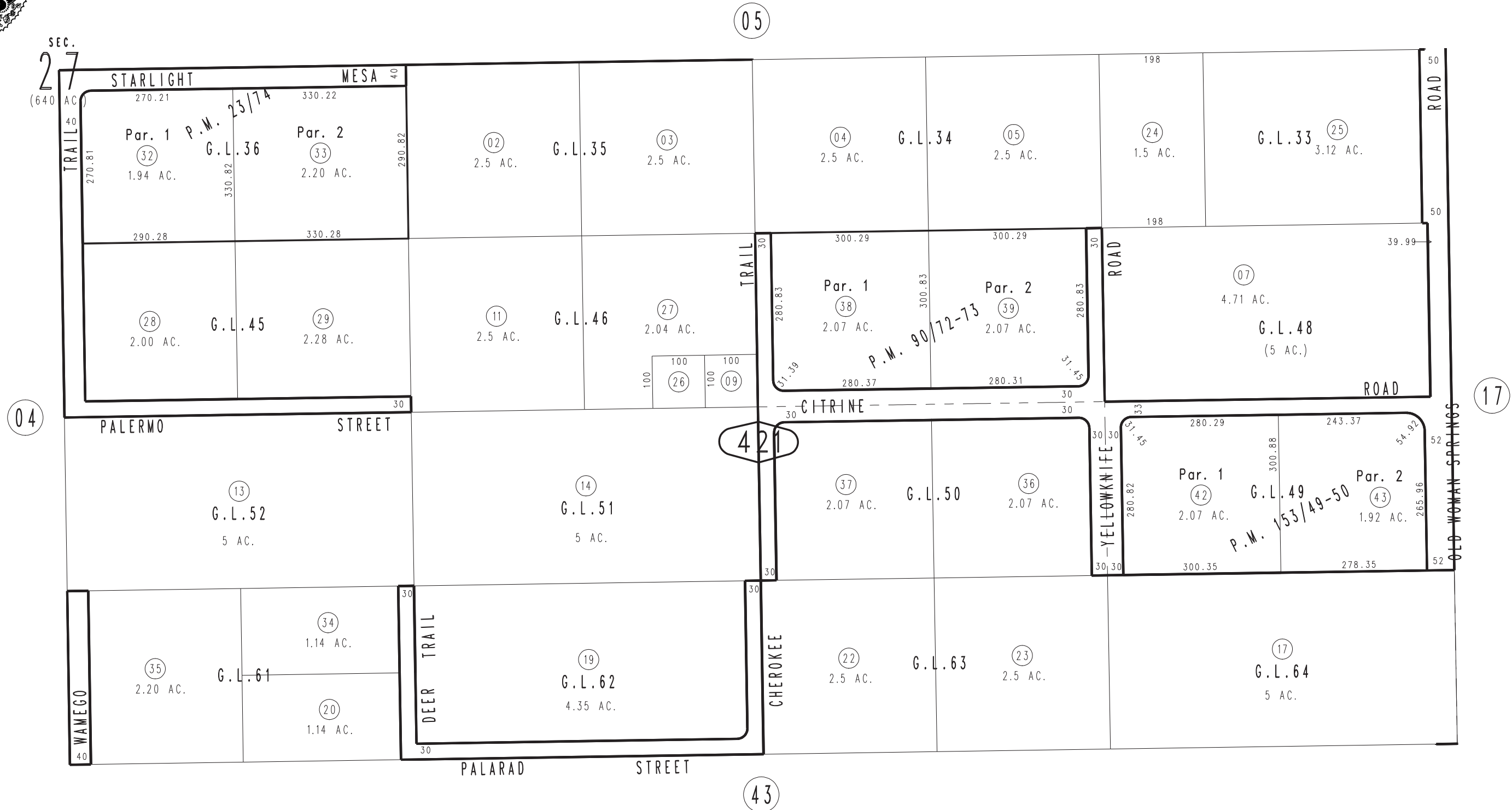


THIS MAP IS FOR THE PURPOSE
OF AD VALOREM TAXATION ONLY.

N.1/2, S.E.1/4, Sec.27, T.2N.,R.5E., S.B.B.&M.

Morongo Unified
Tax Rate Area
94019

0629 - 42



March 2005

Parcel Map No. 8206, P.M. 153/49-50
Parcel Map No. 8782, P.M. 90/72-73
Parcel Map No. 2680, P.M. 23/74

Assessor's Map
Book 0629 Page 42
San Bernardino County

REVISED
01/23/24 XM