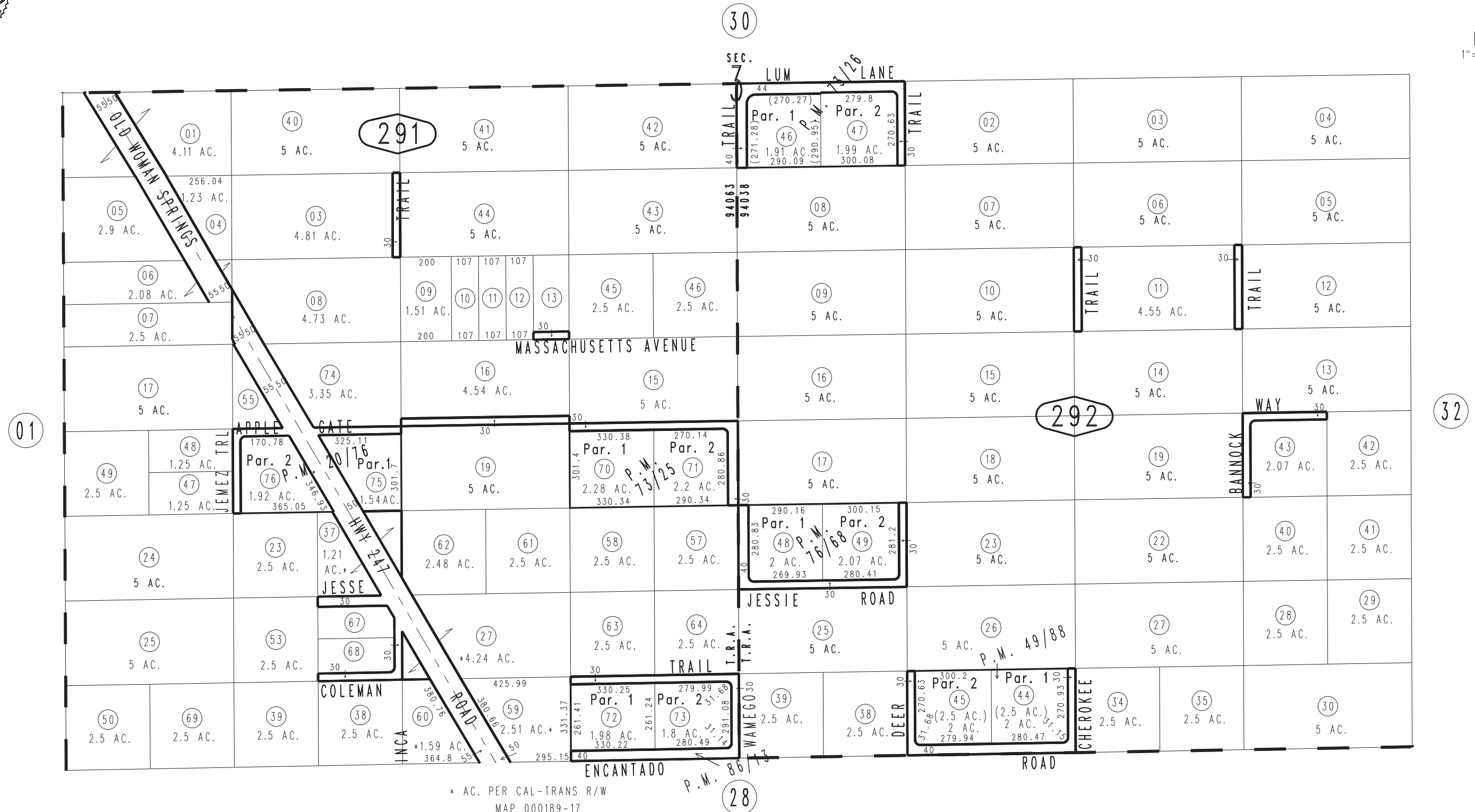


THIS MAP IS FOR THE PURPOSE OF AD VALOREM TAXATION ONLY.

# S.1/2 Fractional Sec.3, T.2N.,R.5E., S.B.B.&M.

Morongo Unified  
Tax Rate Area  
94038 94063

0629 - 29



March 2005

- Parcel Map No. 7880, P.M. 86/13
- Parcel Map No. 7427, P.M. 76/68
- Parcel Map No. 7145, P.M. 73/26
- Parcel Map No. 6988, P.M. 73/25
- Parcel Map No. 5316, P.M. 49/88
- Parcel Map No. 1696, P.M. 20/76

\* AC. PER CAL-TRANS R/W  
MAP 000189-17

Assessor's Map  
Book 0629 Page 29  
San Bernardino County

REVISED

- 04/13/21 KA
- 10/09/21 RU
- 10/27/22 KA
- 03/21/23 KA