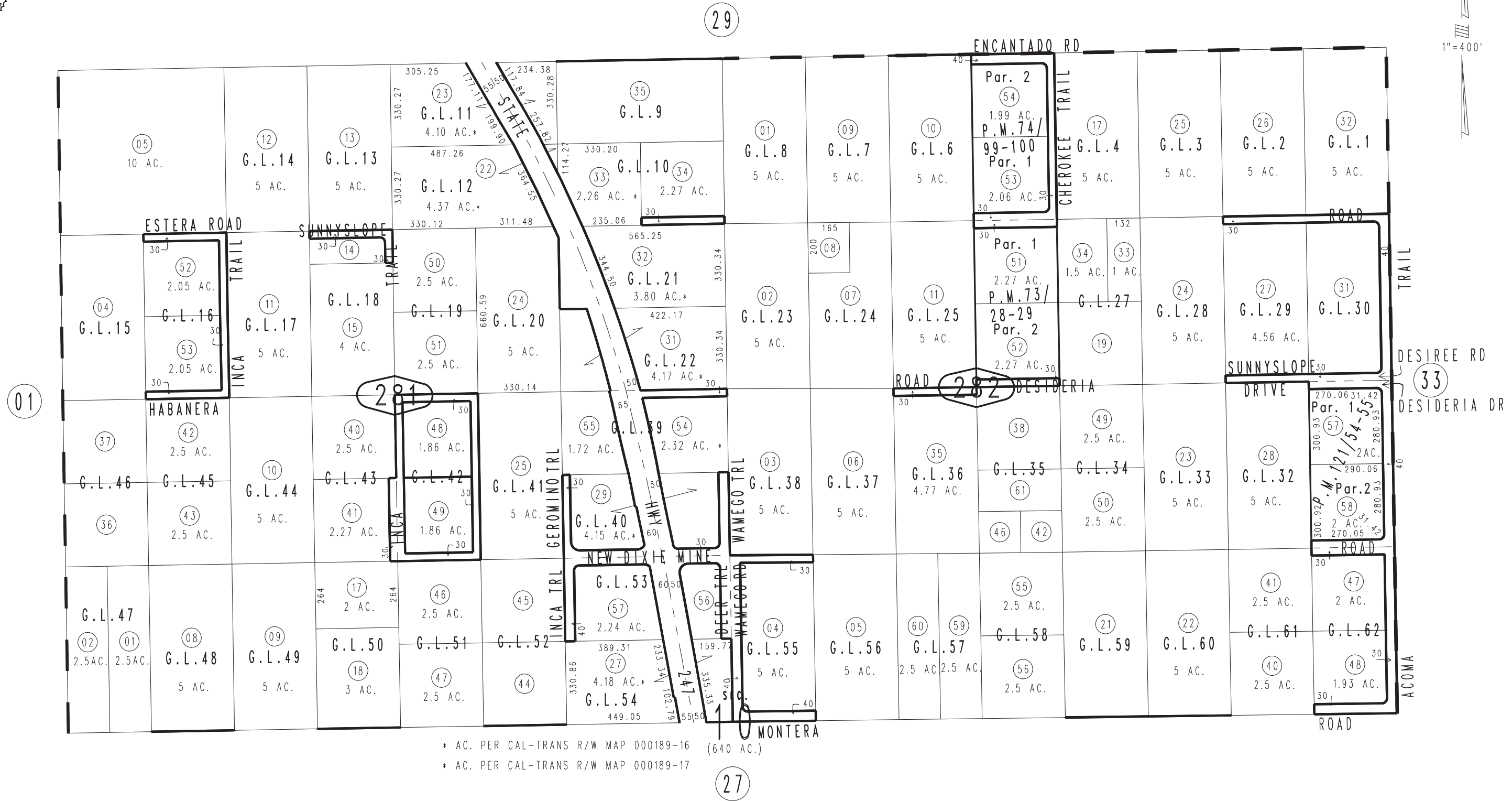
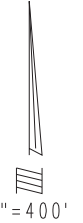


THIS MAP IS FOR THE PURPOSE OF AD VALOREM TAXATION ONLY.

N.1/2 Sec.10, T.2N.,R.5E., S.B.B.&M.

Morongo Unified Tax Rate Area 94063

0629-28



March 2005

Parcel Map No. 10886, P.M. 121/54-55
Parcel Map No. 7485, P.M. 74/99-100
Parcel Map No. 7119, P.M. 73/28-29

Assessor's Map
Book 0629 Page 28
San Bernardino County

REVISED
07/26/21 RU-MC
12/04/23 KA