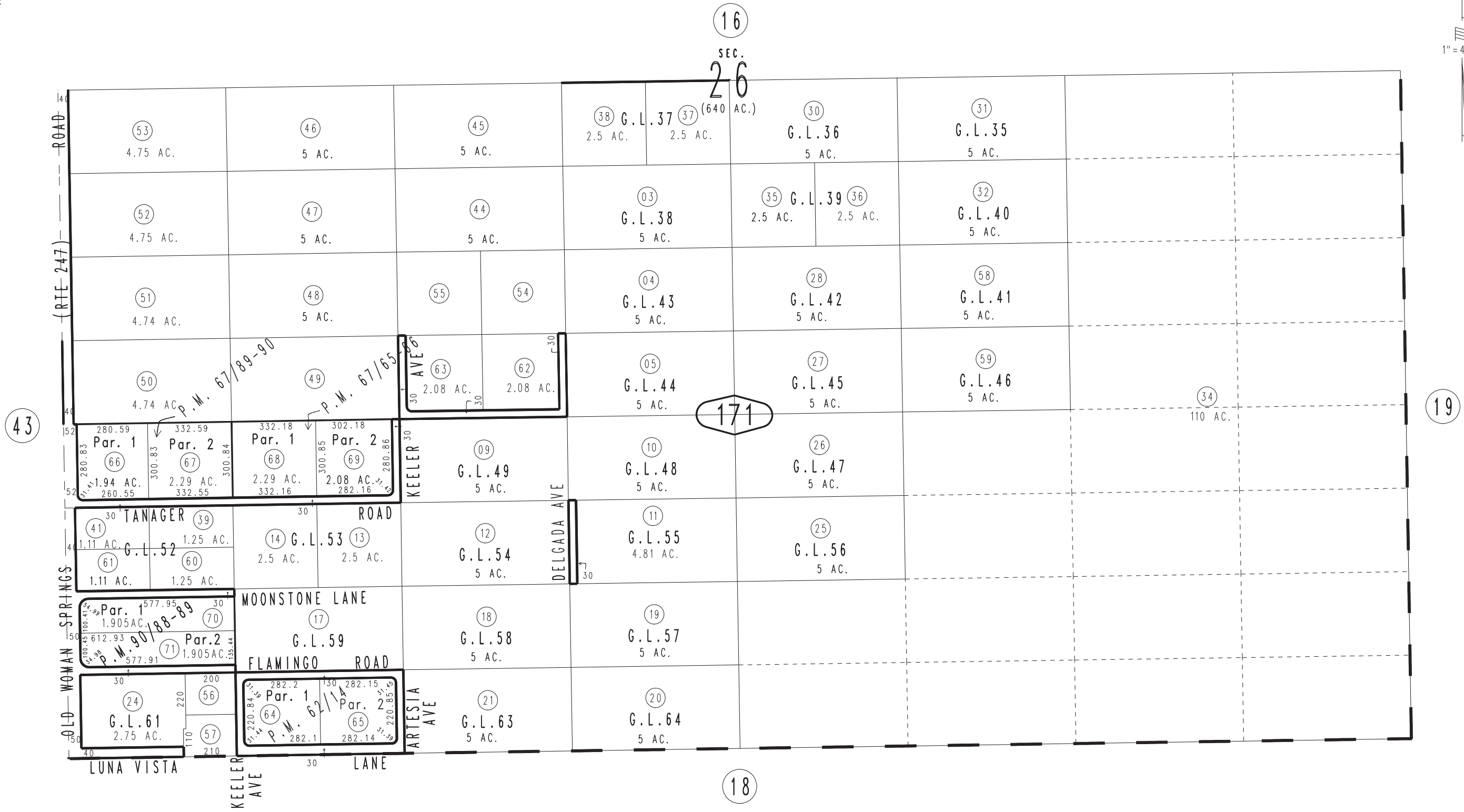
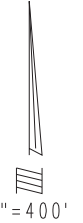


THIS MAP IS FOR THE PURPOSE OF AD VALOREM TAXATION ONLY.

S.1/2 Sec.26, T.2N.,R.5E., S.B.B.&M.

Morongo Unified Tax Rate Area 94019

0629-17



Parcel Map No. 8358, P.M. 90/88-89  
 Parcel Map No. 6819, P.M. 67/89-90  
 Parcel Map No. 6820, P.M. 67/65-66  
 Parcel Map No. 6346, P.M. 62/14

March 2005

Assessor's Map  
 Book 0629 Page 17  
 San Bernardino County

REVISED  
 07/03/24 KC