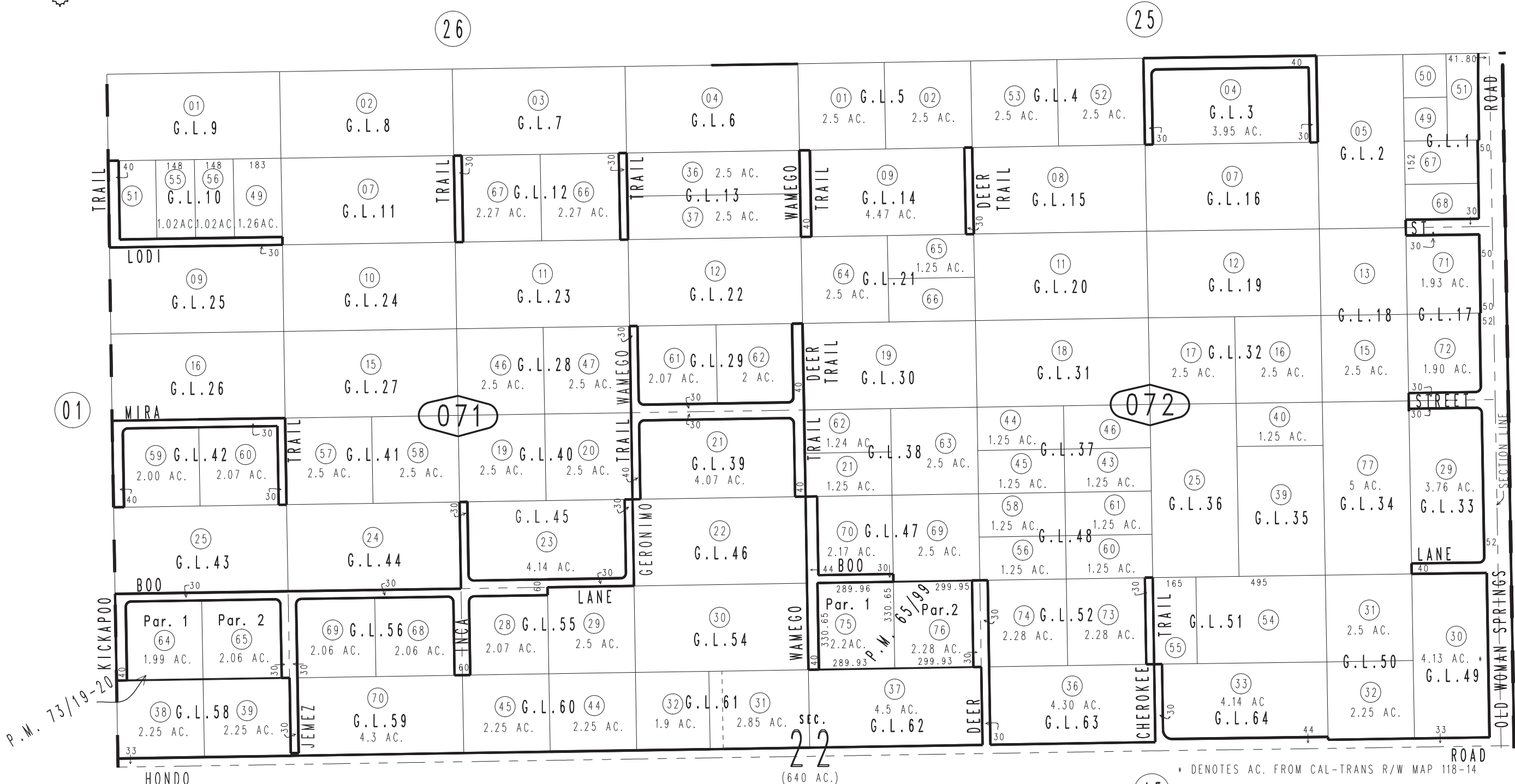


THIS MAP IS FOR THE PURPOSE OF AD VALOREM TAXATION ONLY.

N.1/2 Sec.22, T.2N.,R.5E., S.B.B.&M.

Morongo Unified Tax Rate Area 94077

0629-07



March 2005

Parcel Map No. 7070, P.M. 73/19-20
Parcel Map No. 6655, P.M. 65/99

Assessor's Map
Book 0629 Page 07
San Bernardino County

REVISED
08/30/21 KA