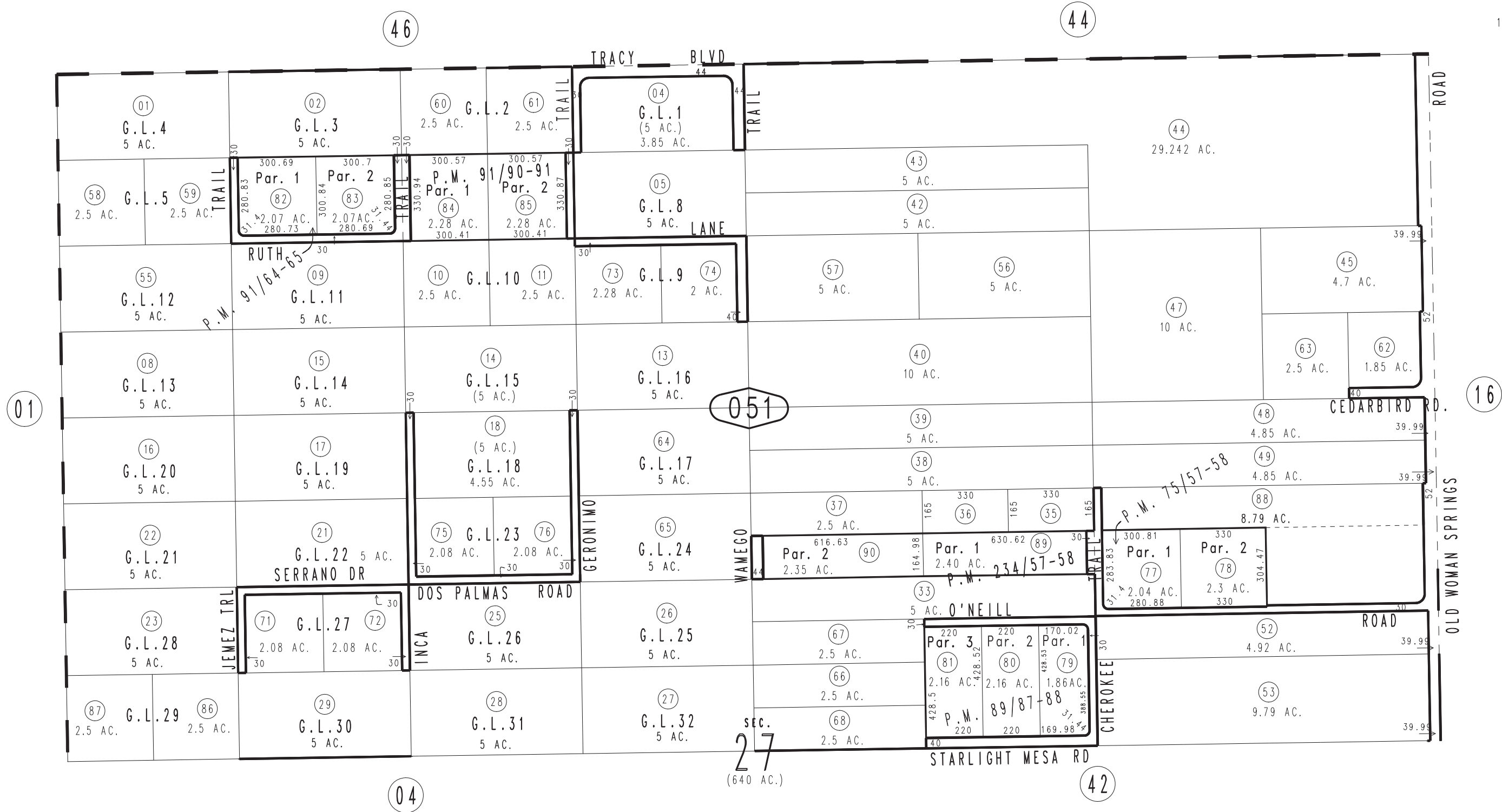


THIS MAP IS FOR THE PURPOSE OF AD VALOREM TAXATION ONLY.

N.1/2 Sec.27, T.2N.,R.5E., S.B.B.&M.

Morongo Unified Tax Rate Area 94019

0629-05



March 2005

Parcel Map No. 8463, P.M. 91/64-65  
Parcel Map No. 8596, P.M. 89/87-88  
Parcel Map No. 7289, P.M. 75/57-58

Parcel Map No. 17966, P.M. 234/57-58  
Parcel Map No. 5975, P.M. 91/90-91

Assessor's Map  
Book 0629 Page 05  
San Bernardino County

REVISED  
8/15/19 KA