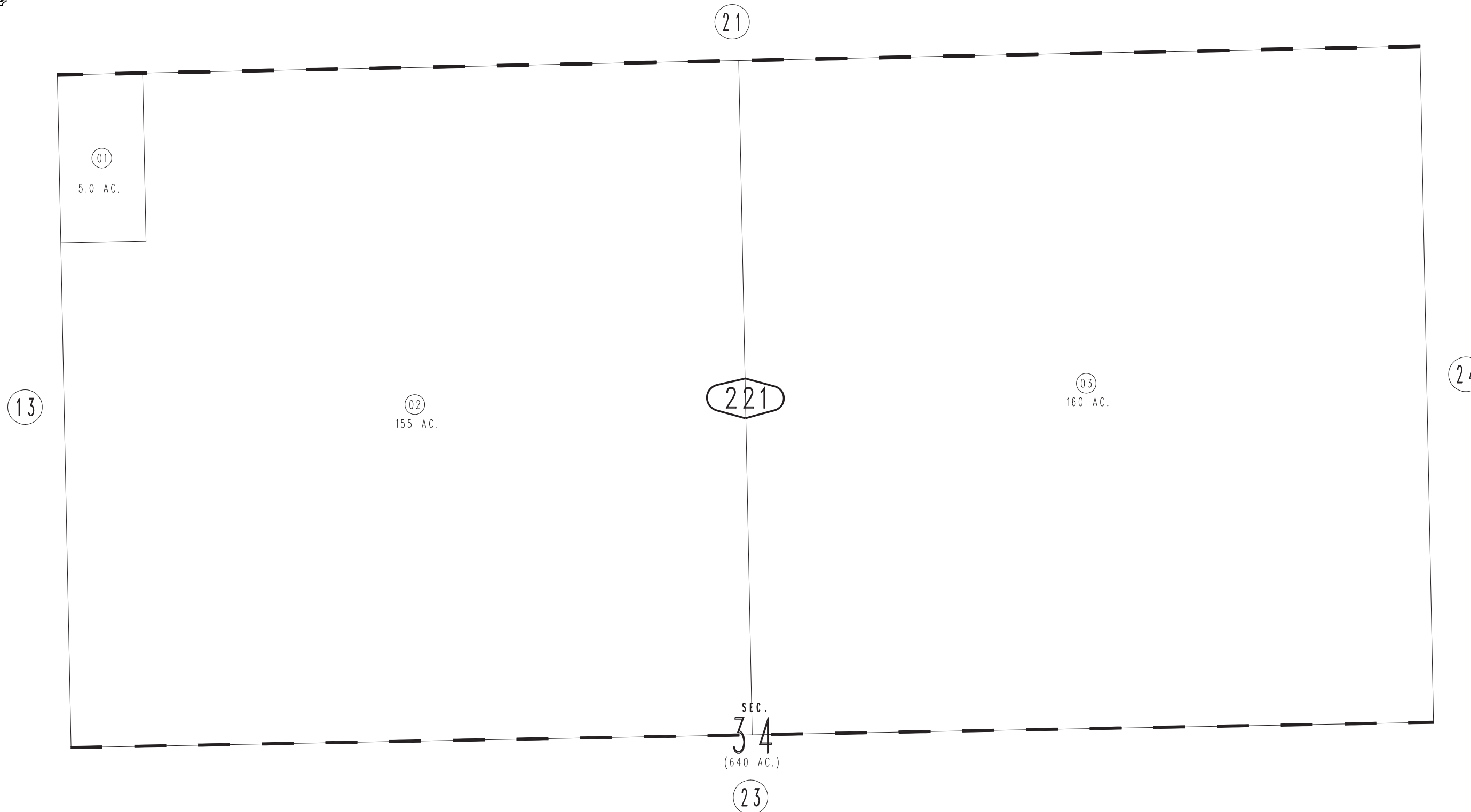


THIS MAP IS FOR THE PURPOSE
OF AD VALOREM TAXATION ONLY.

N.1/2 Sec.34, T.1N.,R.11E., S.B.B.&M.

Morongo Unified
Tax Rate Area
94119

0628-22



March 2005

Assessor's Map
Book 0628 Page 22
San Bernardino County

REVISED
04/05/16 KC-MC