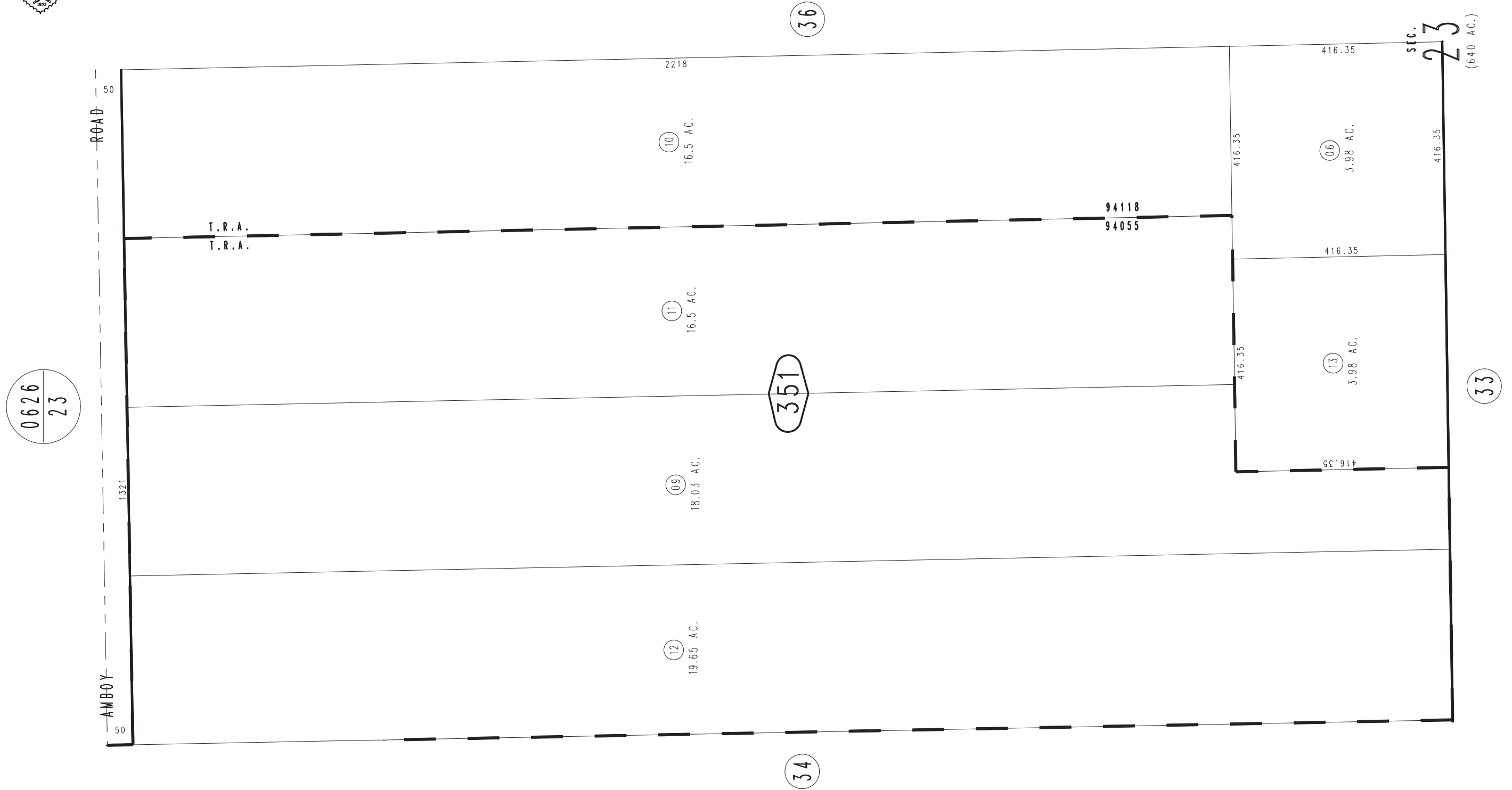
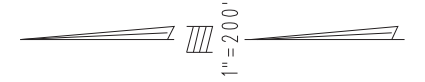


THIS MAP IS FOR THE PURPOSE
OF AD VALOREM TAXATION ONLY.

E.1/2, N.W.1/4 Sec.23, T.1N.,R.10E., S.B.B.&M.

Morongo Unified
Tax Rate Area
94055, 94118

0625-35



0626
23

March 2005

Assessor's Map
Book 0625 Page 35
San Bernardino County

REVISED
03/21/16 KC-MC