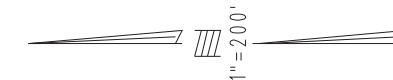


THIS MAP IS FOR THE PURPOSE OF AD VALOREM TAXATION ONLY.

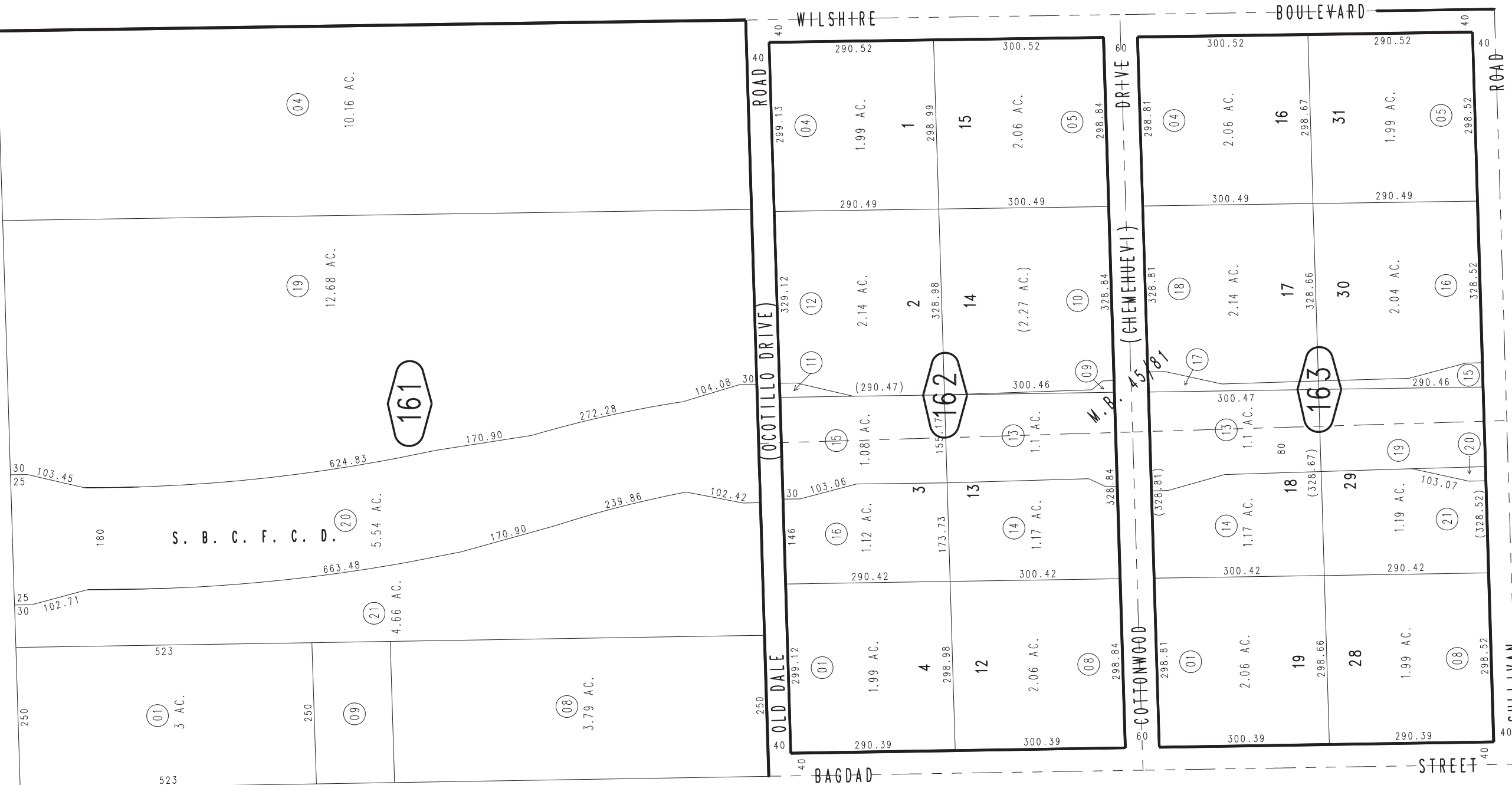
Ptn. E.1/2, N.E.1/4, Sec.34, T.1N.,R.9E., S.B.B.&M.
Ptn. Tract No. 3427, M.B. 45/81

City of Twentynine Palms 0624-16
Tax Rate Area
19001



0623
21

N.E. COR., SEC.34
T.1N.,R.9E.



17

15

05