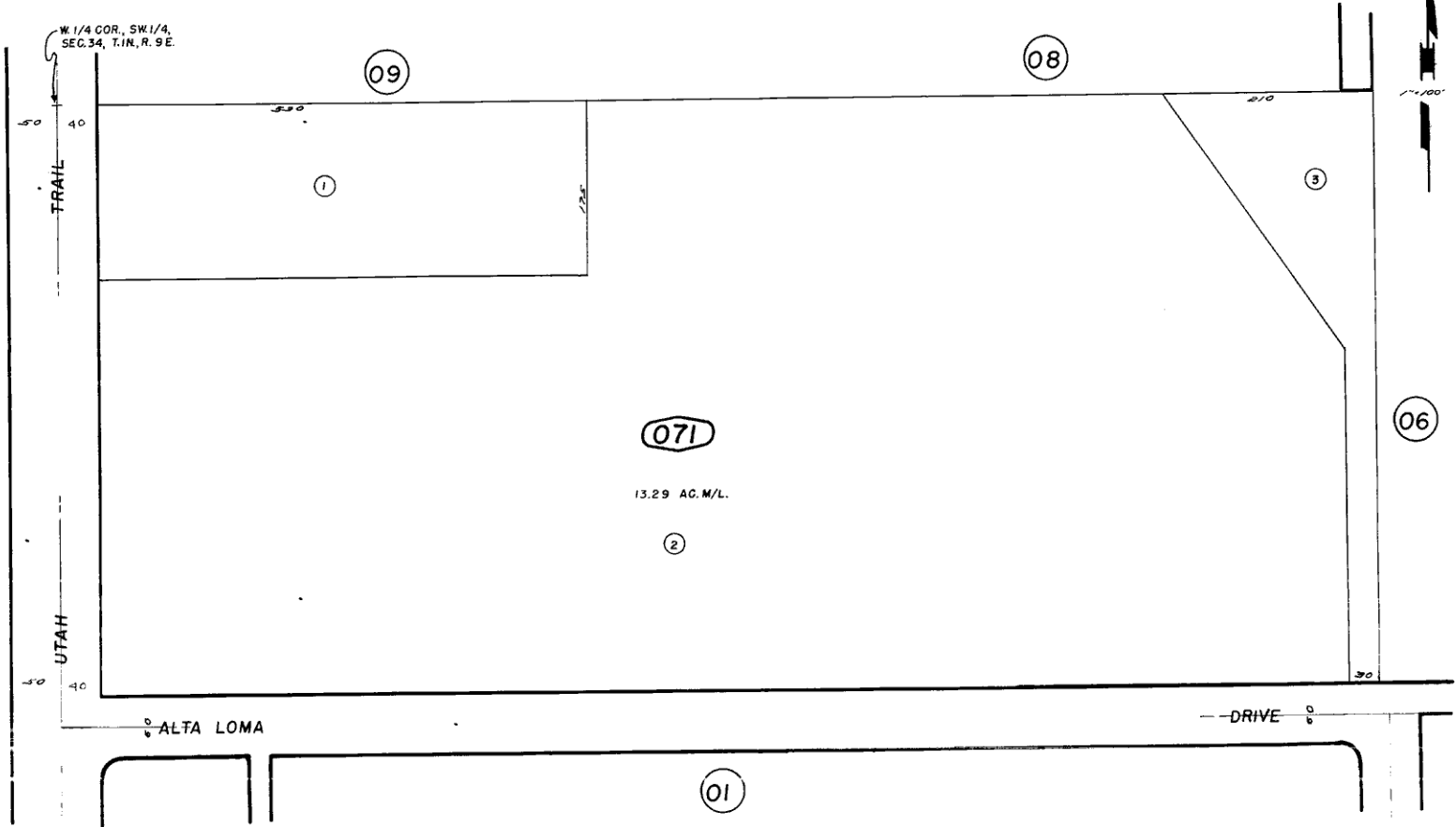




Por. N. 1/2, SW. 1/4, SW. 1/4, Sec. 34, T. 1 N., R. 9 E., S. B. B. & M.

City Of Twentynine Palms
Tax Rate Area
19001

624-07



617
17

071

13.29 AC. M/L.

Assessor's Map
Book 624 Page 07
San Bernardino County

REVISED
12/8/66
3/16/67
6/22/94 RR