

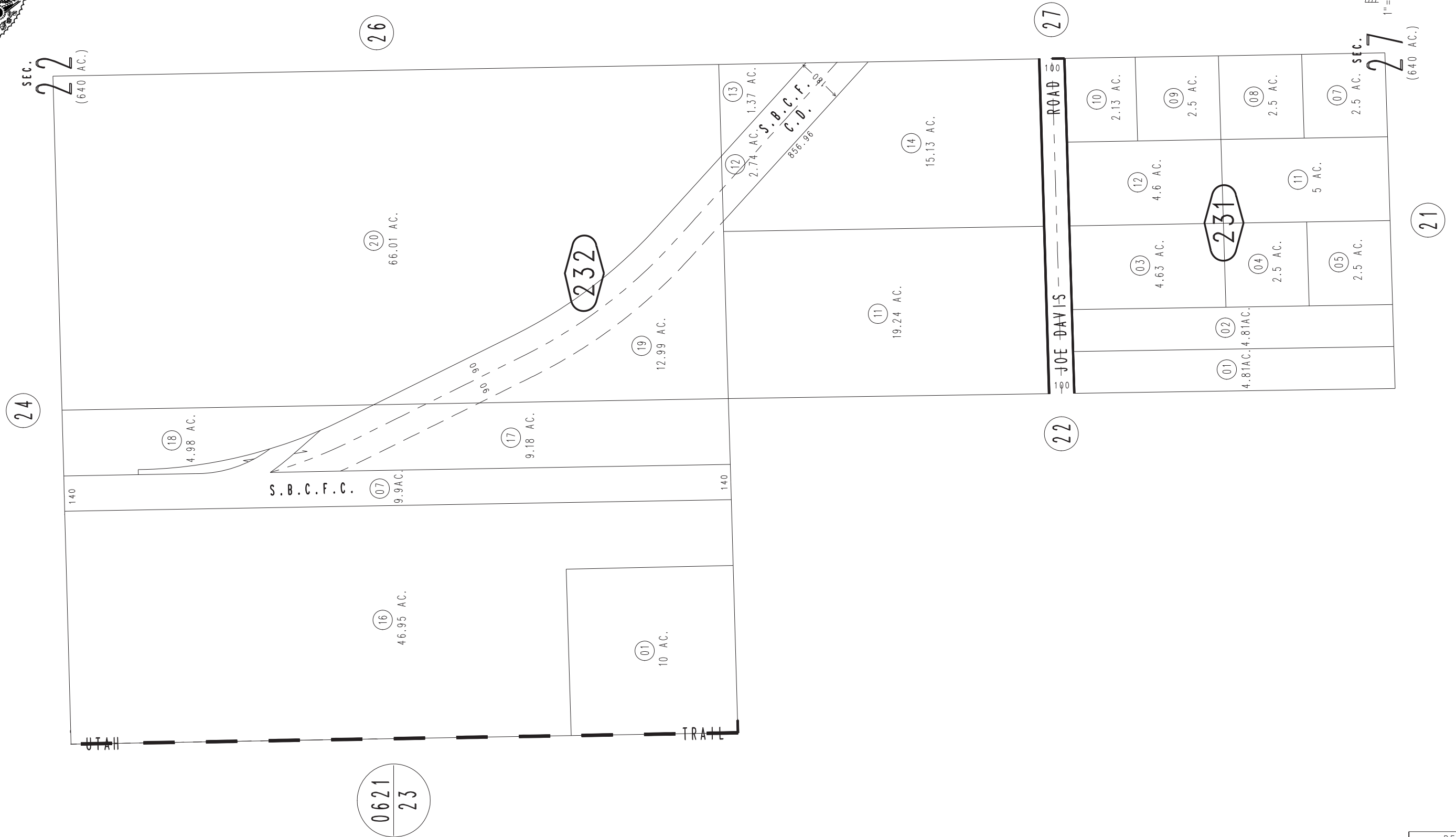
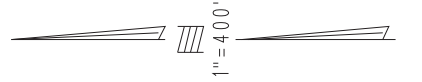
THIS MAP IS FOR THE PURPOSE
OF AD VALOREM TAXATION ONLY.

E.1/2, N.W.1/4, Sec.27 & S.W.1/4, Sec.22, T.1N.,R.9E., S.B.B.&M.

0623-23



City of Twentynine Palms
Tax Rate Area
19001



0621
23