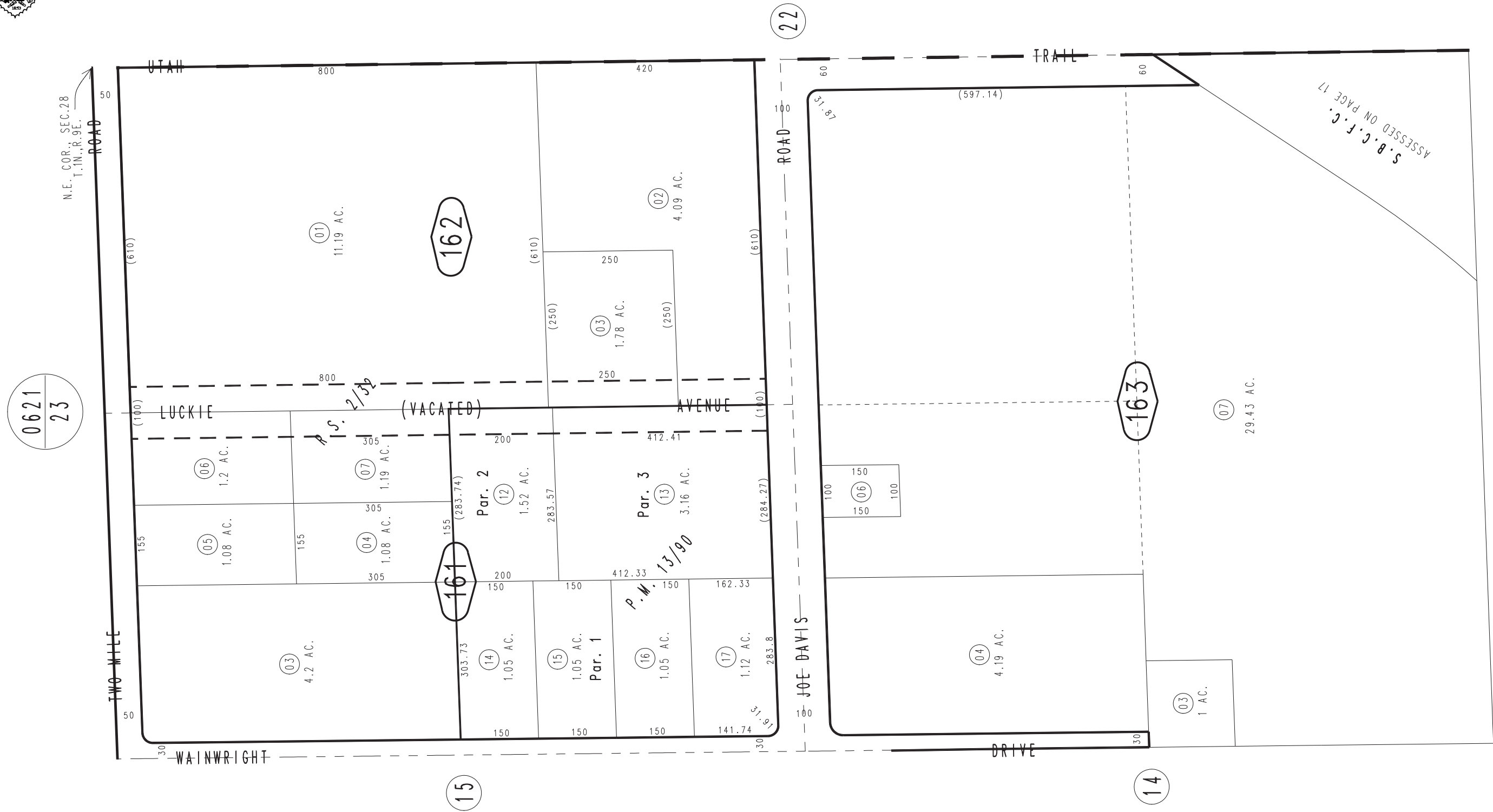


THIS MAP IS FOR THE PURPOSE
OF AD VALOREM TAXATION ONLY.

E.1/2, N.E.1/4, Sec.28, T.1N.,R.9E., S.B.B.&M.
R.S. 2/32

City of Twentynine Palms 0623-16
Tax Rate Area
19015



0621
23

15

14

17