

THIS MAP IS FOR THE PURPOSE OF AD VALOREM TAXATION ONLY.

Ptn. N.W.1/4, N.W.1/4, Sec.28, T.1N.,R.9E., S.B.B.&M.

City of Twentynine Palms
Tax Rate Area
19015

0623-12

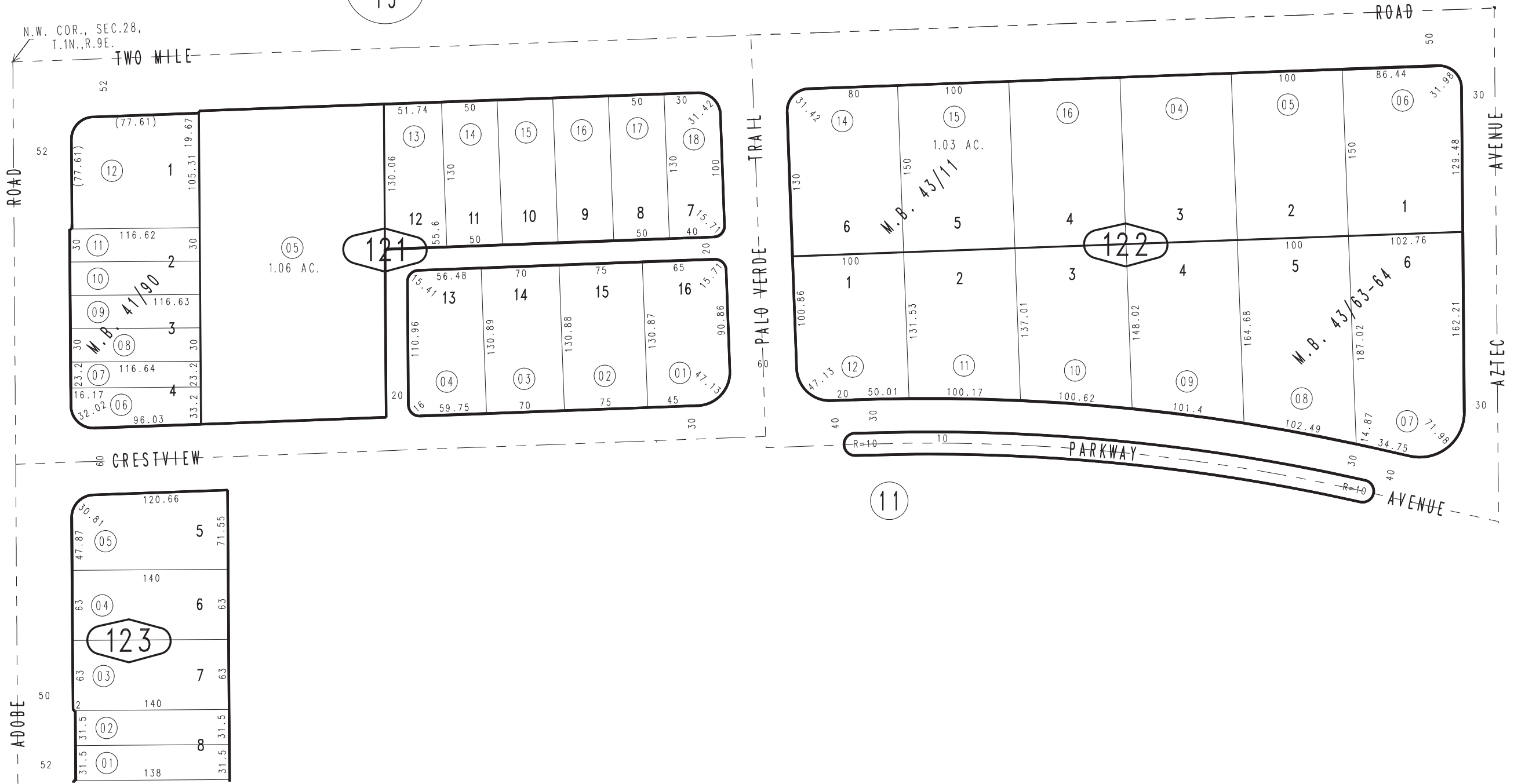


0621
15

0621
16

0618
34

13



10

Ptn. Adobe Heights Unit No. 7, Tract No. 3242, M.B. 43/63-64
Adobe Heights Unit No. 4, Tract No. 3226, M.B. 43/11
Ptn. Adobe Heights Unit No. 1, Tract No. 3093, M.B. 41/90

March 2005

Assessor's Map
Book 0623 Page 12
San Bernardino County

REVISED
08/15/22 KC