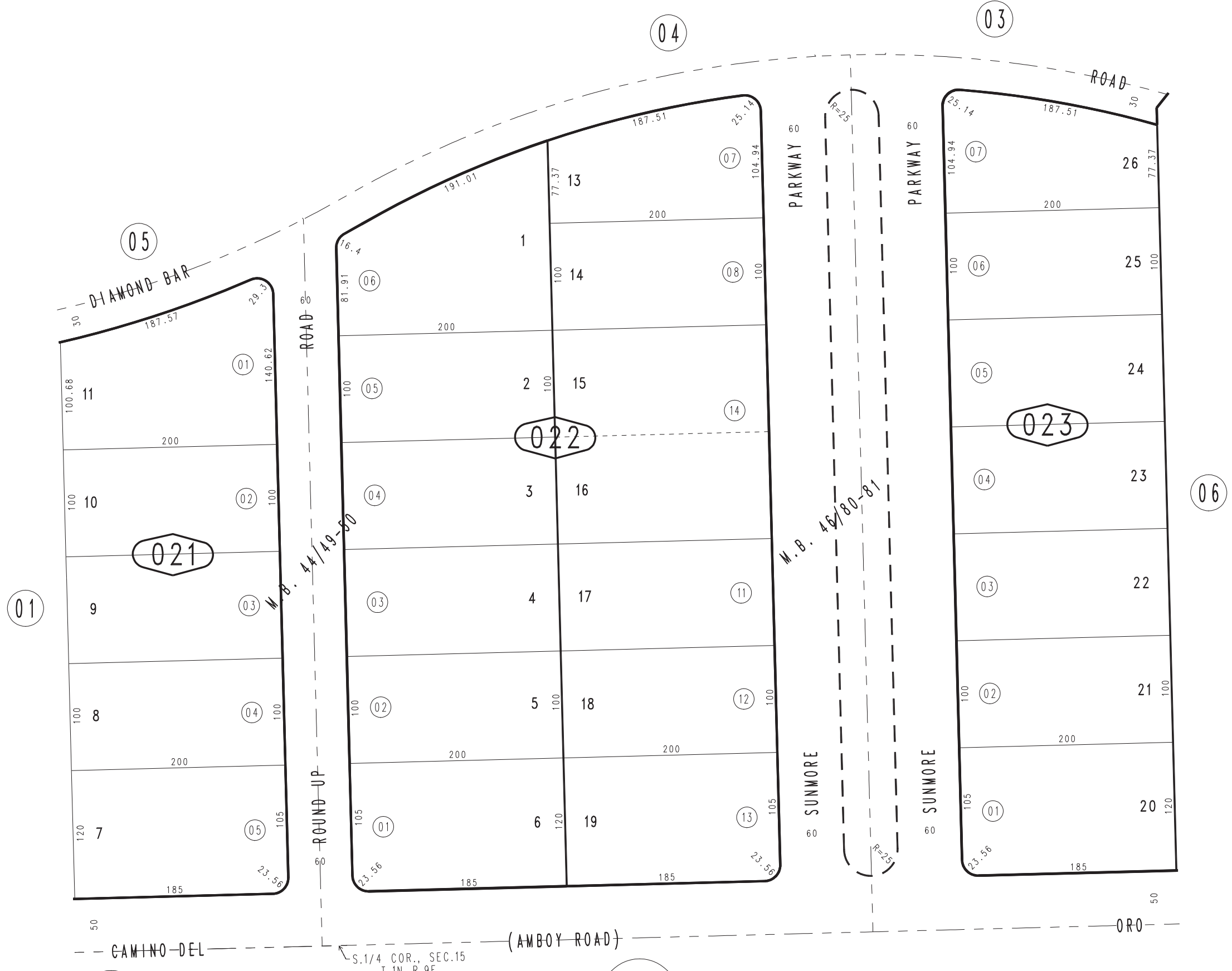


THIS MAP IS FOR THE PURPOSE  
OF AD VALOREM TAXATION ONLY.

Ptn. Tract No. 3275, M.B. 46/80-81  
Ptn Tract No. 3268, M.B. 44/49-50

City of Twentynine Palms  
Tax Rate Area  
19001

0622-02



0623  
25

0623  
26