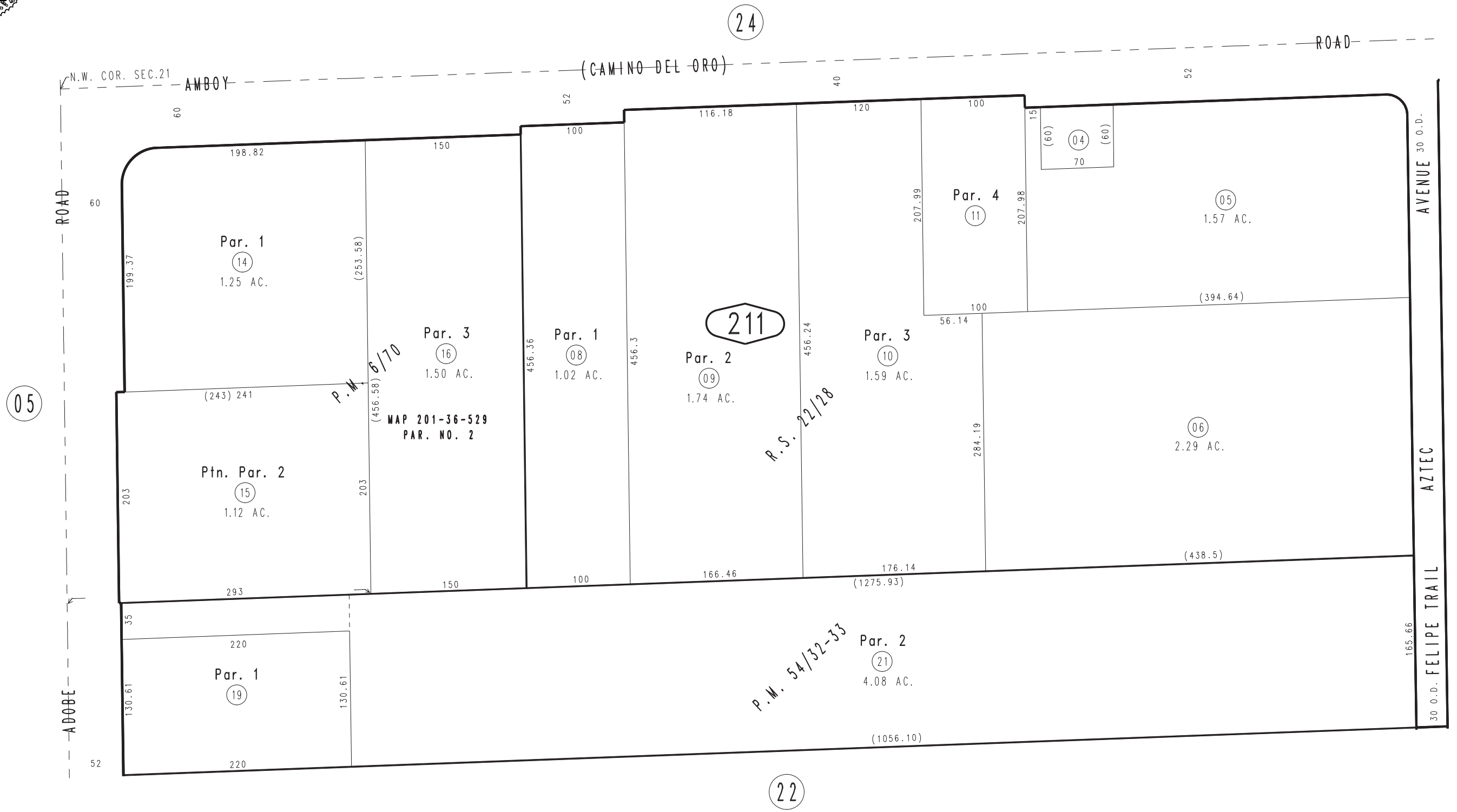


THIS MAP IS FOR THE PURPOSE
OF AD VALOREM TAXATION ONLY.

N.1/2, N.W.1/4, N.W.1/4 Sec.21, T.1N.,R.9E., S.B.B.&M.

City of Twentynine Palms
Tax Rate Area
19015

0621 - 21



March 2005

Parcel Map No. 5672, P.M. 54/32-33
Parcel Map No. 703, P.M. 6/70
R.S. 22/28

Assessor's Map
Book 0621 Page 21
San Bernardino County

REVISED
01/23/18 KA
03/30/20 KA
02/03/21 KA