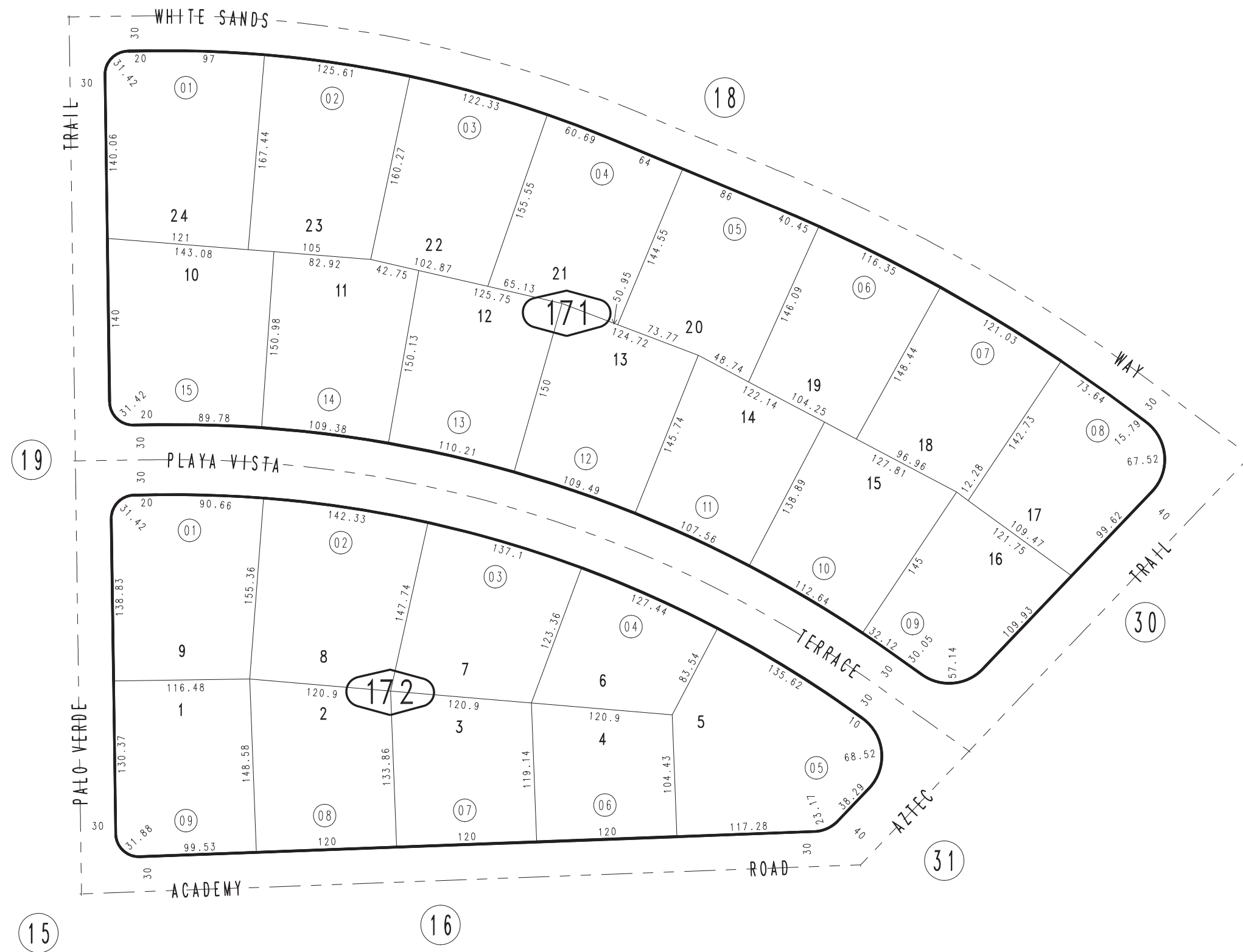


THIS MAP IS FOR THE PURPOSE
OF AD VALOREM TAXATION ONLY.

Ptn. Homestead Heights Unit No. 2, Tract No. 3245 M.B. 44/68

City of Twentynine Palms
Tax Rate Area
19015

0621 - 17



March 2005

Assessor's Map
Book 0621 Page 17
San Bernardino County

REVISED