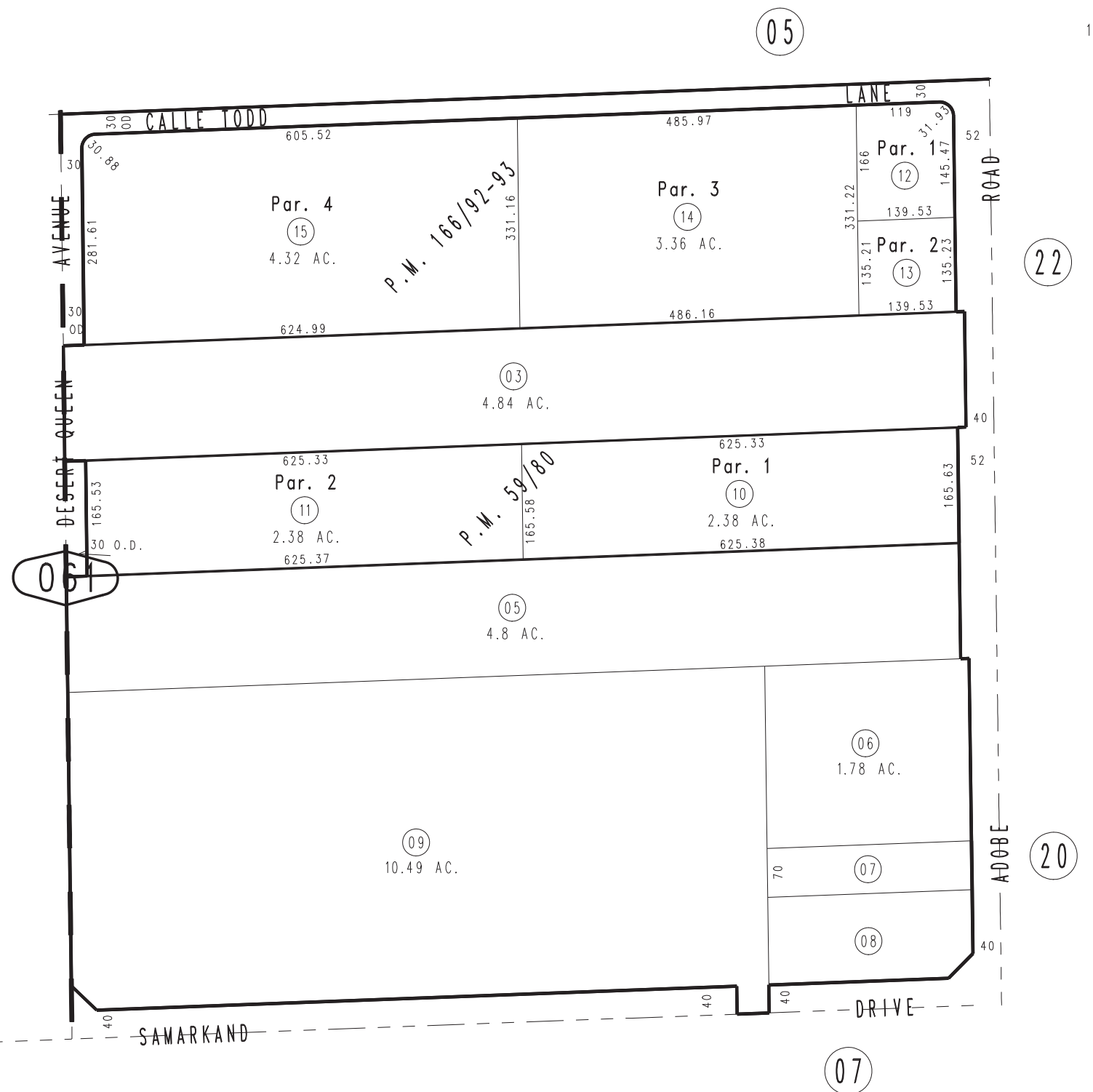


THIS MAP IS FOR THE PURPOSE
OF AD VALOREM TAXATION ONLY.

S.1/2, N.E.1/4 Sec.20, T.1N.,R.9E., S.B.B.&M.

City of Twentynine Palms 0621 - 06
Tax Rate Area
19015



SEC.
20
(640 AC.)

March 2005

Parcel Map No. 14122, P.M. 166/92-93
Parcel Map No. 6258, P.M. 59/80

Assessor's Map
Book 0621 Page 06
San Bernardino County

REVISED
03/12/13 RM-MC