

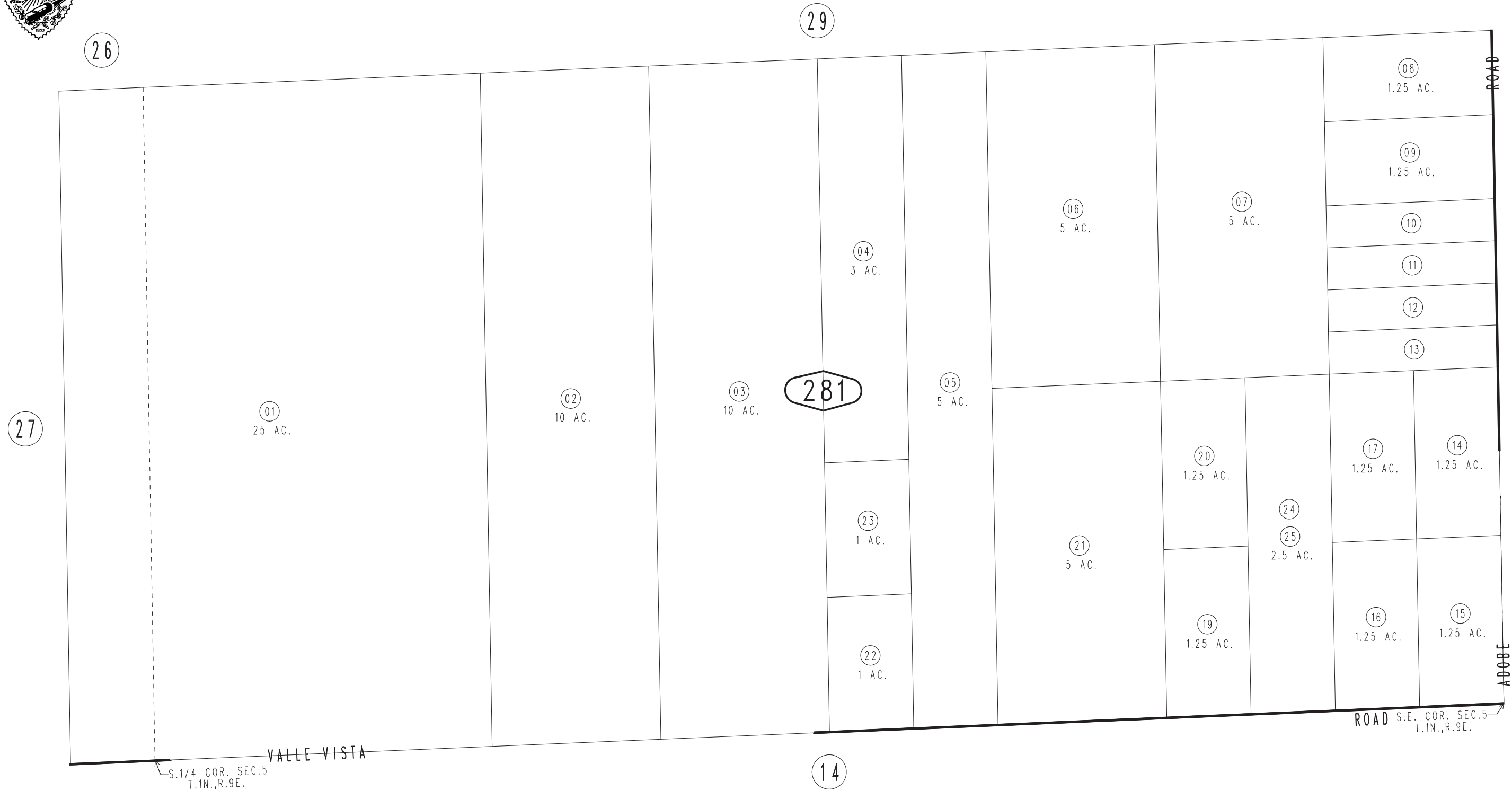
THIS MAP IS FOR THE PURPOSE  
OF AD VALOREM TAXATION ONLY.

S.1/2, S.E.1/4 & Ptn. S.1/2, S.W.1/4 Fractional Sec.5, T.1N.,R.9E., S.B.B.&M.  
R.S. 2/34

0620-28



City of Twentynine Palms  
Tax Rate Area  
19001



0622  
30