



N.1/2, N.W.1/4, S.E.1/4 Fractional Sec. 19, T.1N.R.9E., S.B.B.&M.

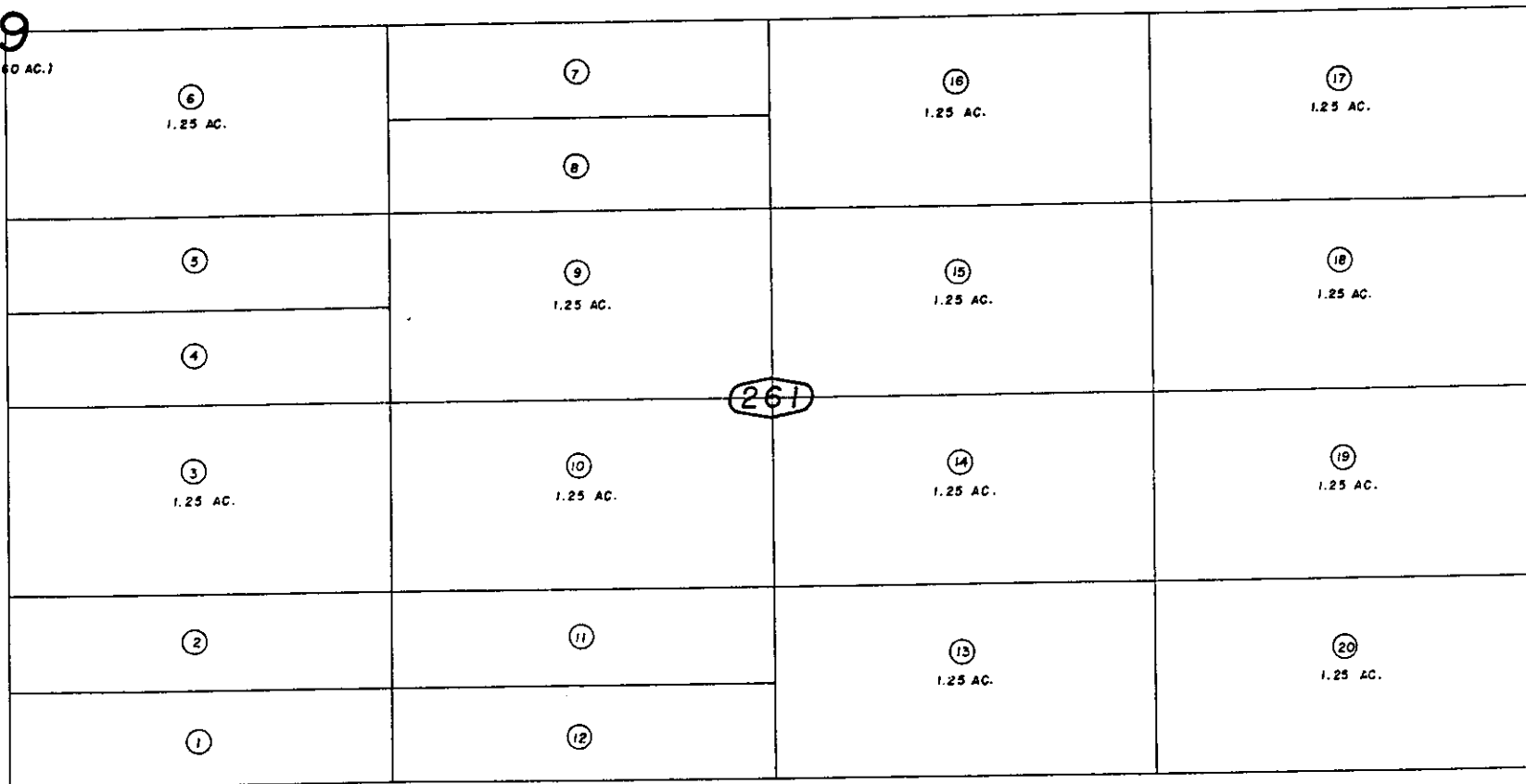
City of Twentynine Palms
Tax Rate Area
19015

NOTE: ALL LOTS .625 AC.
UNLESS OTHERWISE NOTED

SEC.

19

(645.00 AC.)



1" = 100'

25

07

17

27

261

Note - Assessor's Blk. & Lot
Numbers Shown in Circles

Assessor's Map
Book 619 Page 26
San Bernardino County

REVISE
2/20/6
3-17-67
2/15/95

July 1959