

THIS MAP IS FOR THE PURPOSE  
OF AD VALOREM TAXATION ONLY.

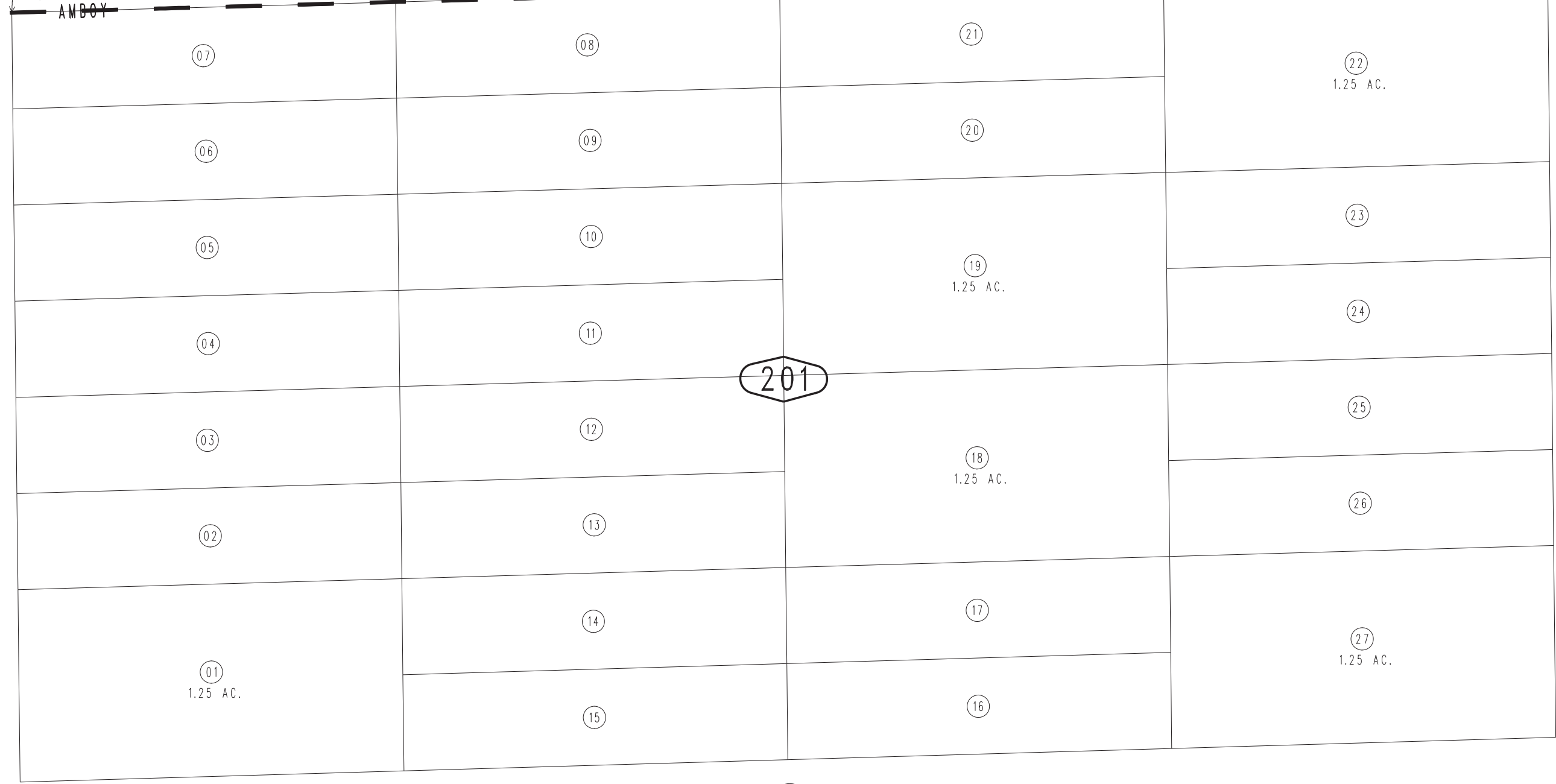
N.1/2, N.W.1/4, N.E.1/4 Fractional Sec.19, T.1N.,R.9E., S.B.B.&M.

City of Twentynine Palms 0619 - 20  
Tax Rate Area  
19015



0620  
02

N.1/4 COR. SEC.19, T.1N.,R.9E.



13

21

19

REVISED