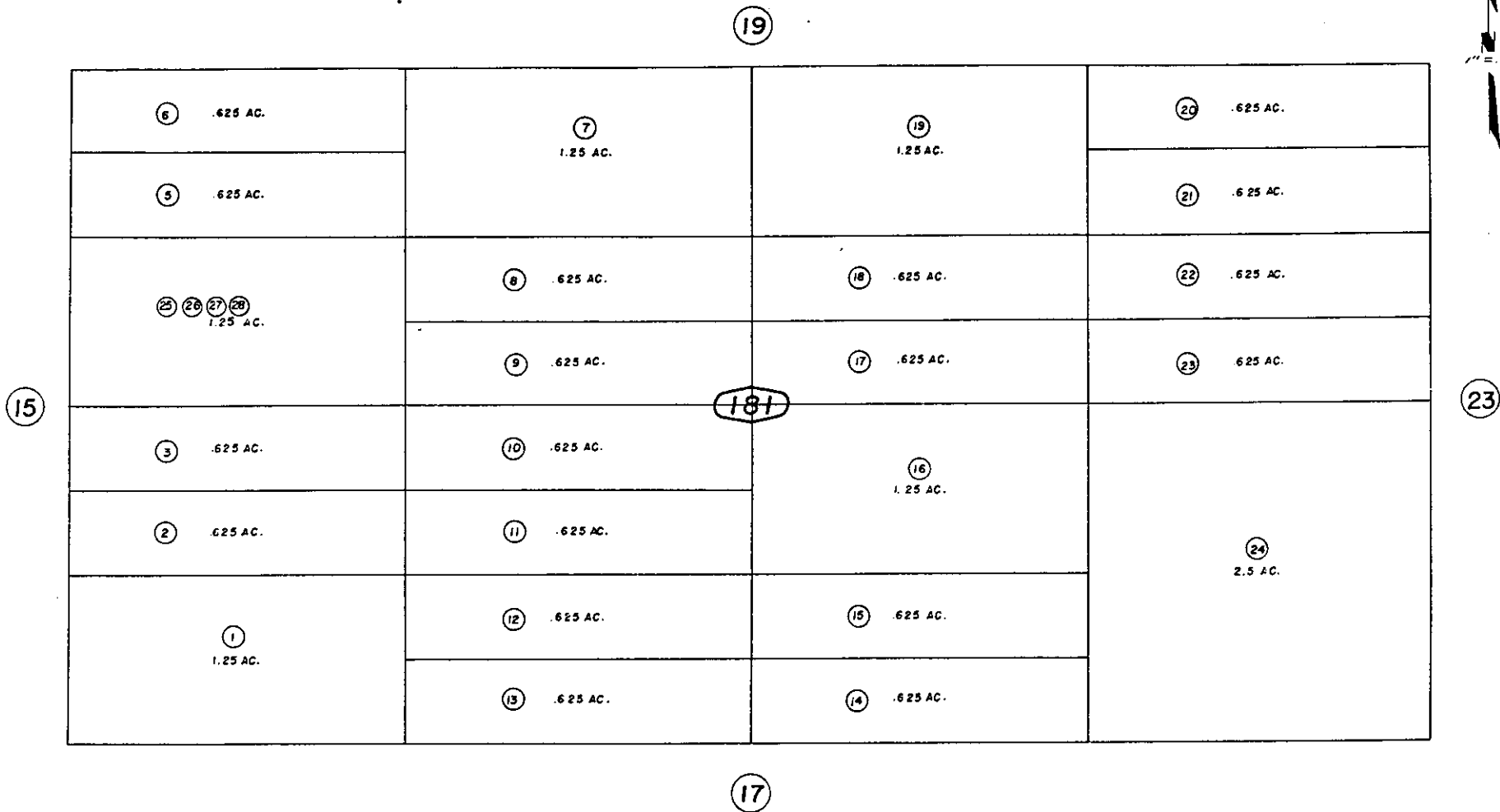




N.1/2, S.W.1/4, N.E.1/4 Fractional Sec.19, T.1N.R.9E., S.B.B.&M.

City of Twentynine Palms  
Tax Rate Area  
19015



Note - Assessor's Blk. & Lot  
Numbers Shown in Circles

Assessor's Map  
Book 619, Page 18  
San Bernardino County

REVISE  
2/20/61  
3-17-67  
5/11/88  
2/15/95

*Don*