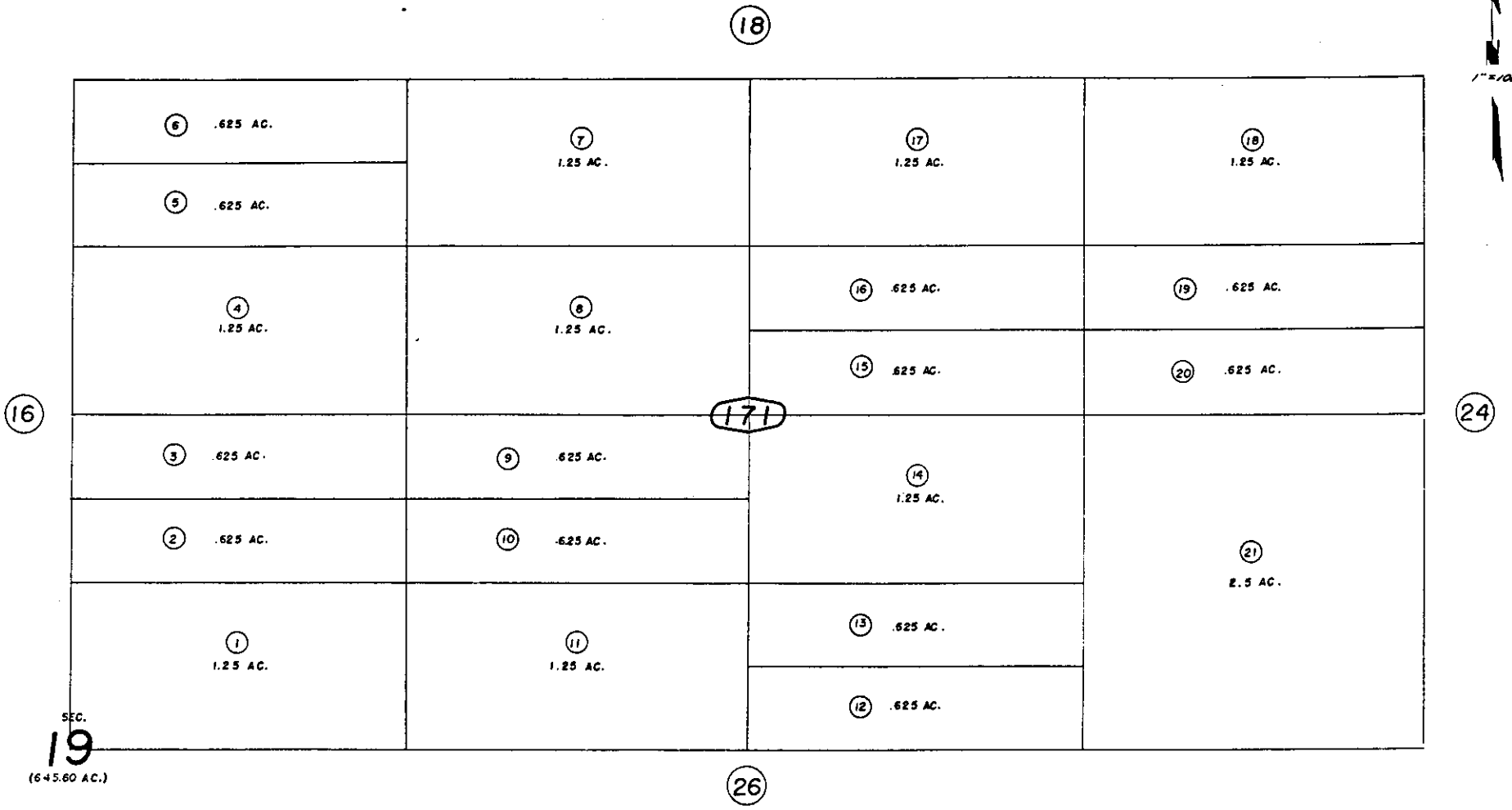




S.1/2, S.W.1/4, N.E.1/4 Fractional Sec. 19, T.1N.R.9E., S.B.B.&M.

City of Twentynine Palms  
Tax Rate Area  
19015



June 1959

Note-Assessor's Blk. & Lot  
Numbers Shown in Circles

Assessor's Map  
Book 619, Page 17  
San Bernardino County

REVISE
2/20/66
3-16-67
2/15/95 R