

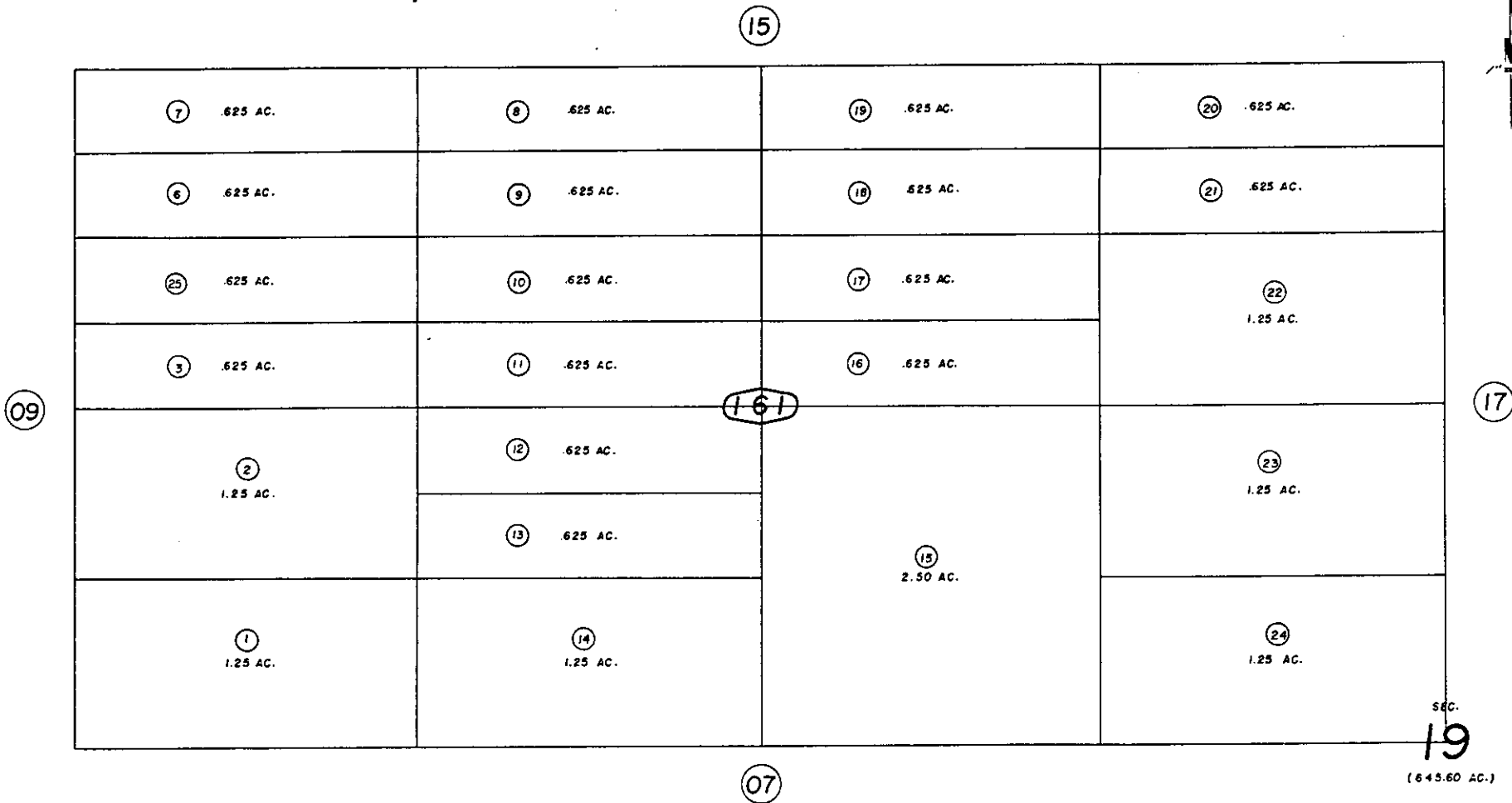


S.1/2, S.E.1/4, N.W.1/4 Fractional Sec. 19, T.1N.R.9E., S.B.B. & M.

City of Twentynine Palms  
Tax Rate Area  
19015

619 - 16

1"=100'



June 1959

Note - Assessor's Blk. & Lot  
Numbers Shown in Circles

Assessor's Map  
Book 619 Page 16  
San Bernardino County

REVISE  
2/20/6  
3-16-67  
2/3/95C  
2/15/95 R