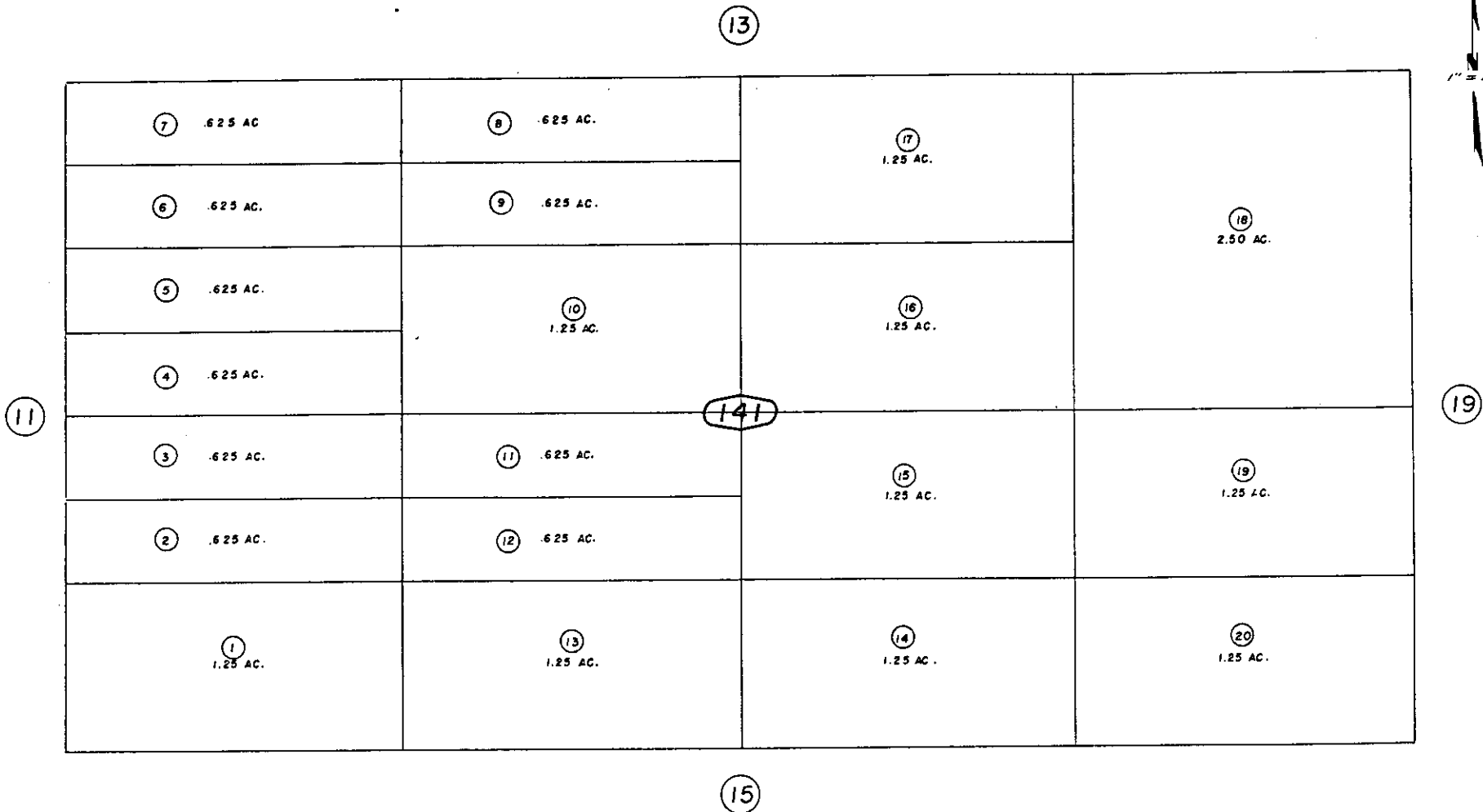




S.1/2, N.E.1/4, N.W.1/4 Fractional Sec. 19, T.1N.R.9E., S.B.B.&M.

City of Twentynine Palms
Tax Rate Area
19015



1" = 100'

Note - Assessor's Blk. & Lot
Numbers Shown in Circles

Assessor's Map
Book 619, Page 14
San Bernardino County

REVISE
2/26/66
3-16-67
2/15/95