

THIS MAP IS FOR THE PURPOSE
OF AD VALOREM TAXATION ONLY.

N.1/2, N.E.1/4, N.W.1/4 Fractional Sec.19, T.1N.,R.9E., S.B.B.&M.

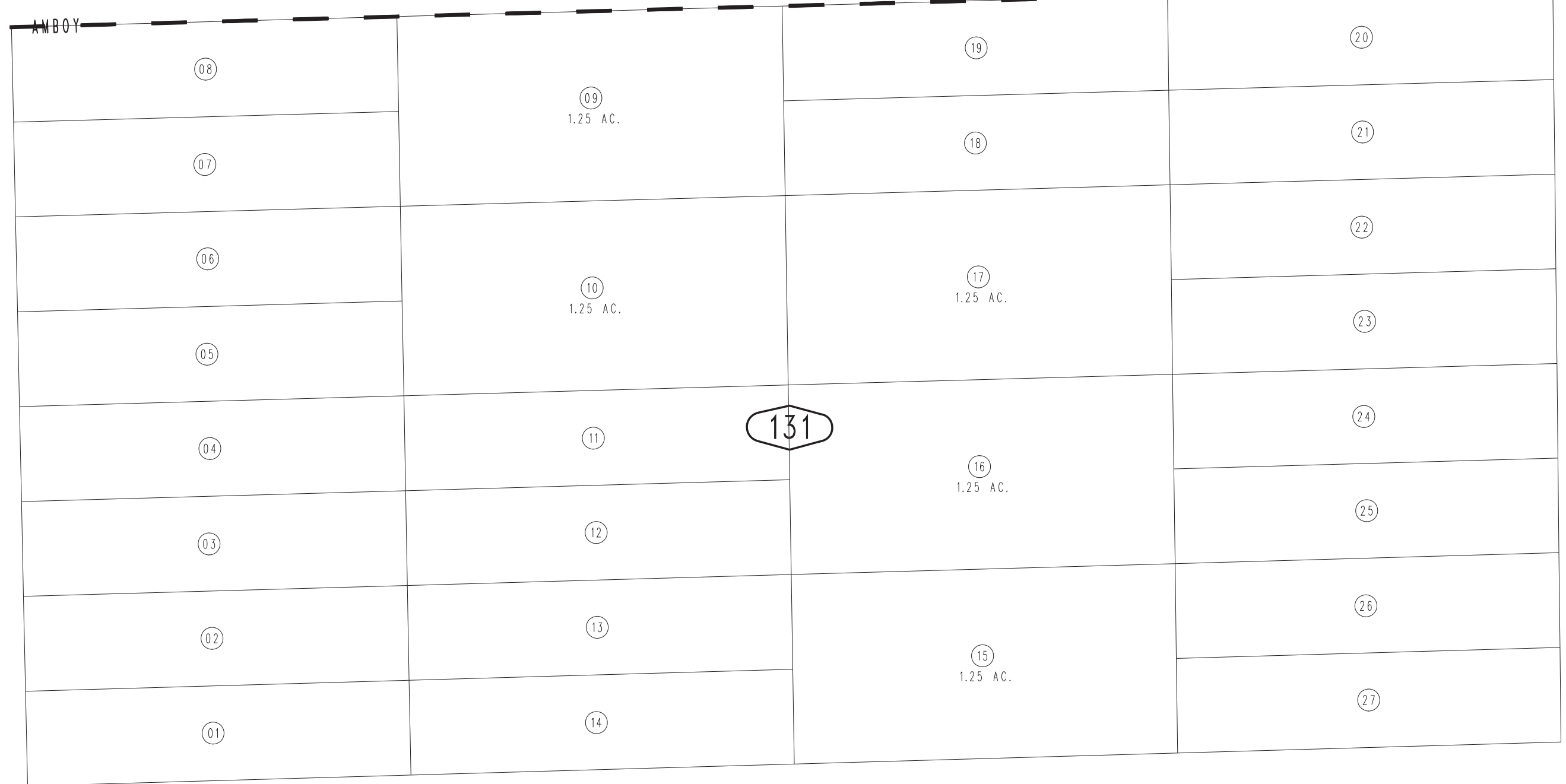
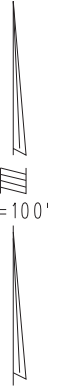
City of Twentynine Palms 0619 - 13
Tax Rate Area
19015



0620
01

N.1/4 COR., SEC.19
T.1N.,R.9E.

ROAD



12

20

14