

THIS MAP IS FOR THE PURPOSE  
OF AD VALOREM TAXATION ONLY.

N.1/2, S.W.1/4, N.W.1/4 Fractional Sec.19, T.1N.,R.9E., S.B.B.&M.

City of Twentynine Palms 0619 - 10  
Tax Rate Area  
19015

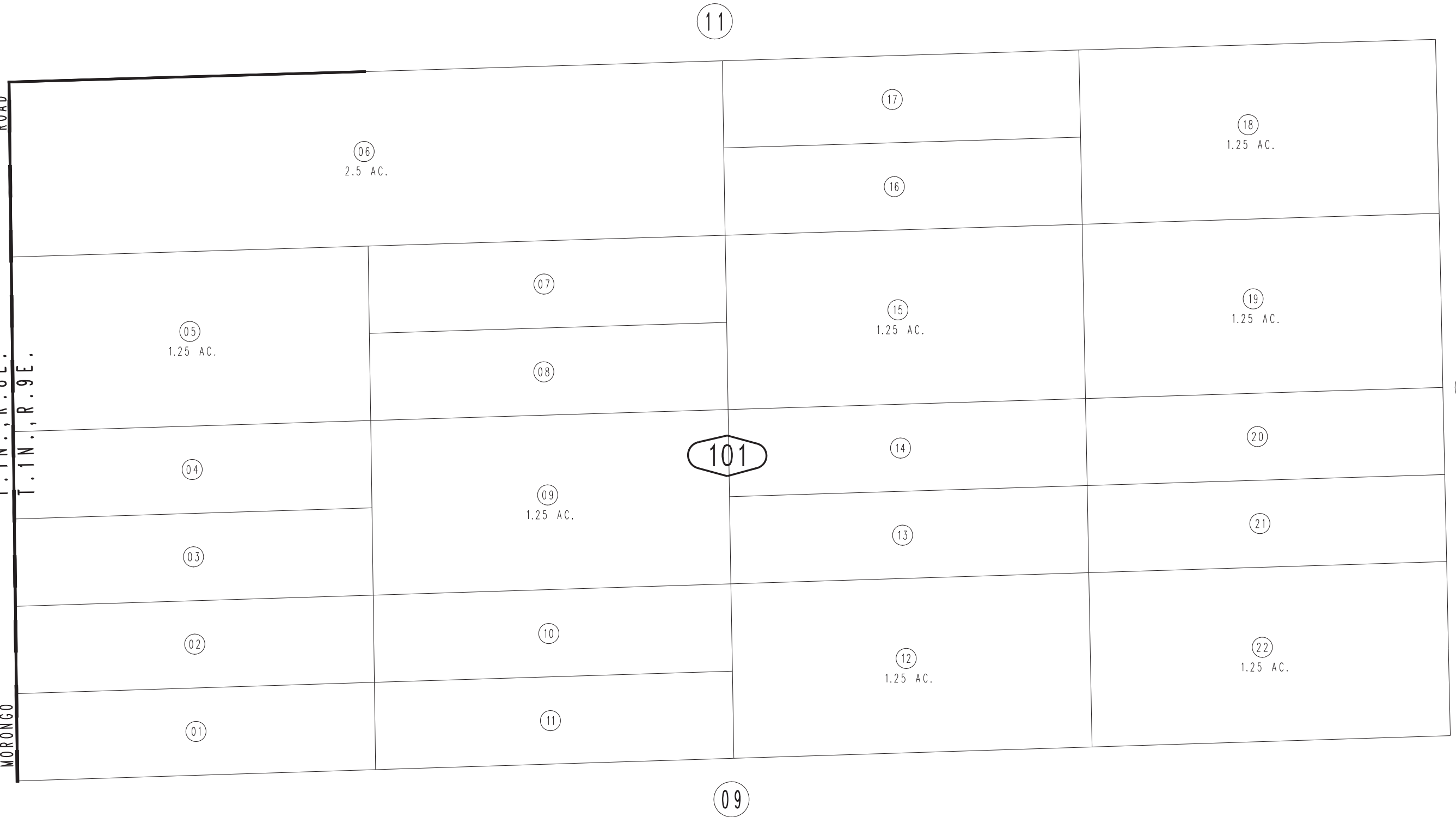


0612  
21

ROAD

T.1N.,R.8E.  
T.1N.,R.9E.

MORONGO



1"=100'