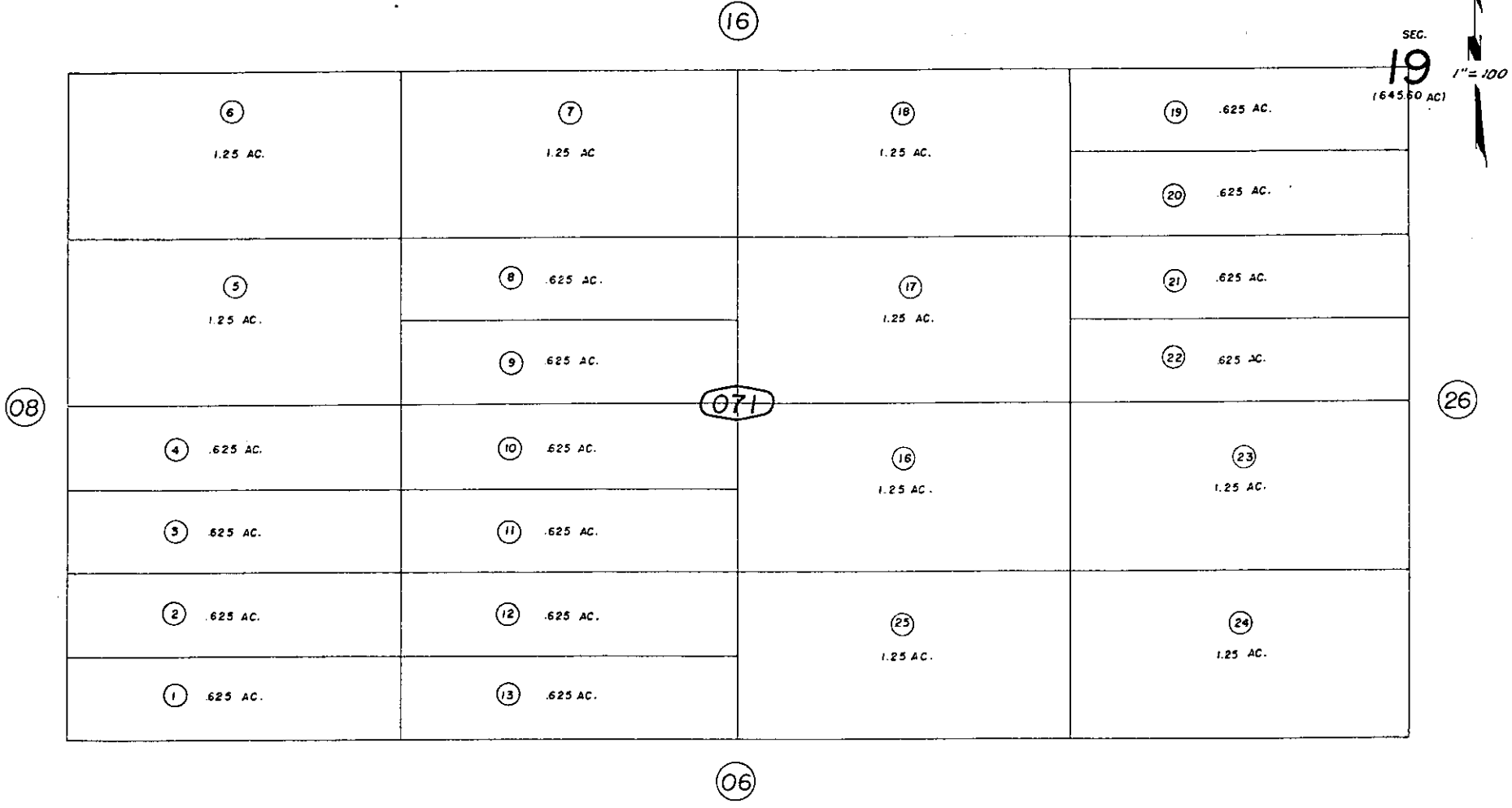




N.1/2, N.E.1/4, SW.1/4 Fractional Sec. 19, T.1N.R.9E., S.B.B.8M.

City of Twentynine Palms  
Tax Code Area  
19015

619-07



Note - Assessor's Blk. & Lot  
Numbers Shown in Circles

Assessor's Map  
Book 619 Page 07  
San Bernardino County

REVISE  
2/20/16  
3-18-67  
2/15/55

June 1959