

E.1/4 COR. SEC.29
T.1N.,R.9E., S.B.B.&M.

0623
06

Ptn. Civic Center Unit No. 2, Tract No. 3132, M.B. 44/78
Ptn. Civic Center Unit No. 4, Tract No. 3987, M.B. 51/36
Ptn. S.E.1/4, S.E.1/4 Sec.29, T.1N.,R.9E., S.B.B.&M.

City of Twentynine Palms 0618 - 25
Tax Rate Area
19015

1"=100'

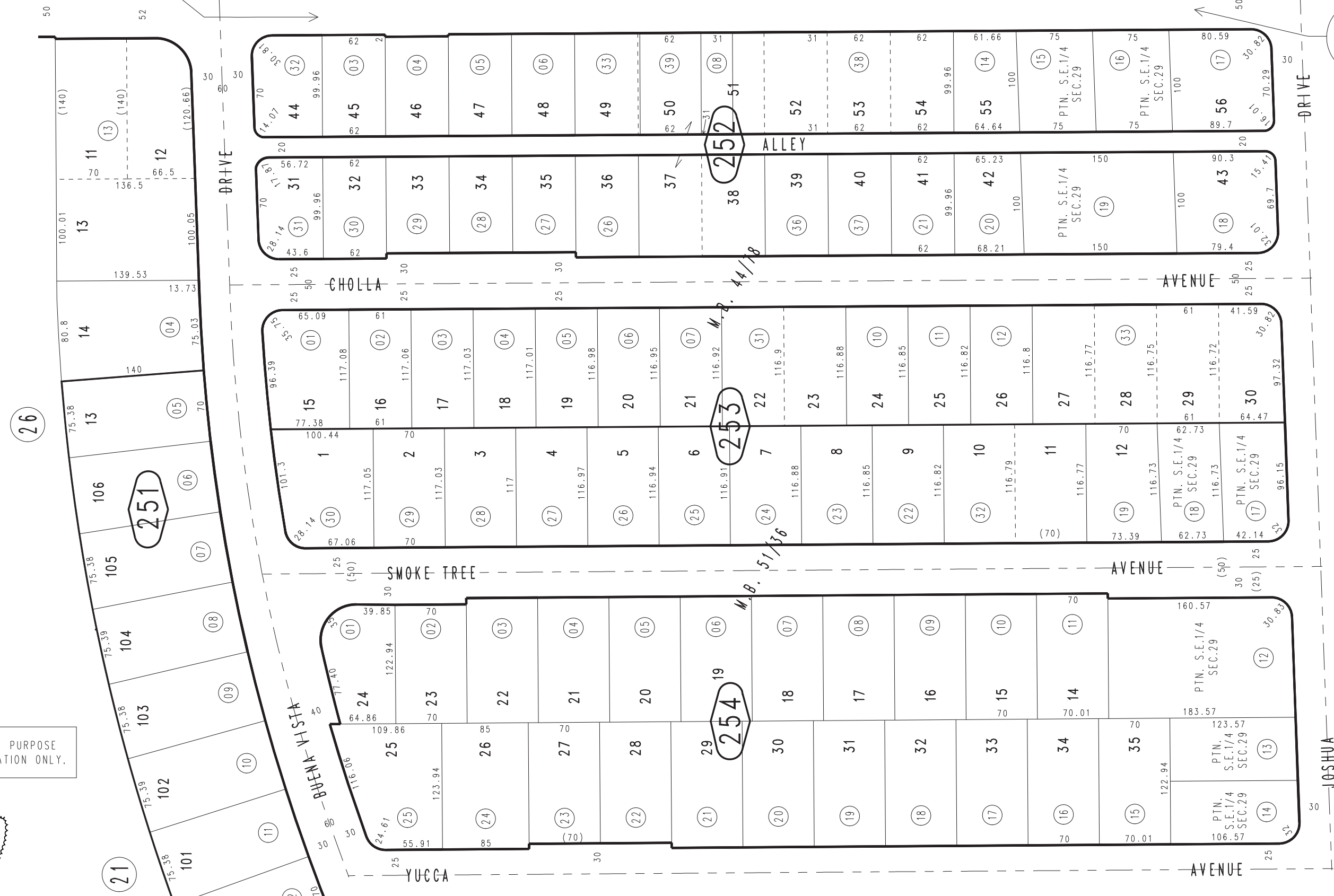
0623
01

23

THIS MAP IS FOR THE PURPOSE
OF AD VALOREM TAXATION ONLY.



February 2005



Assessor's Map
Book 0618 Page 25
San Bernardino County

REVISED
05/19/16 KC