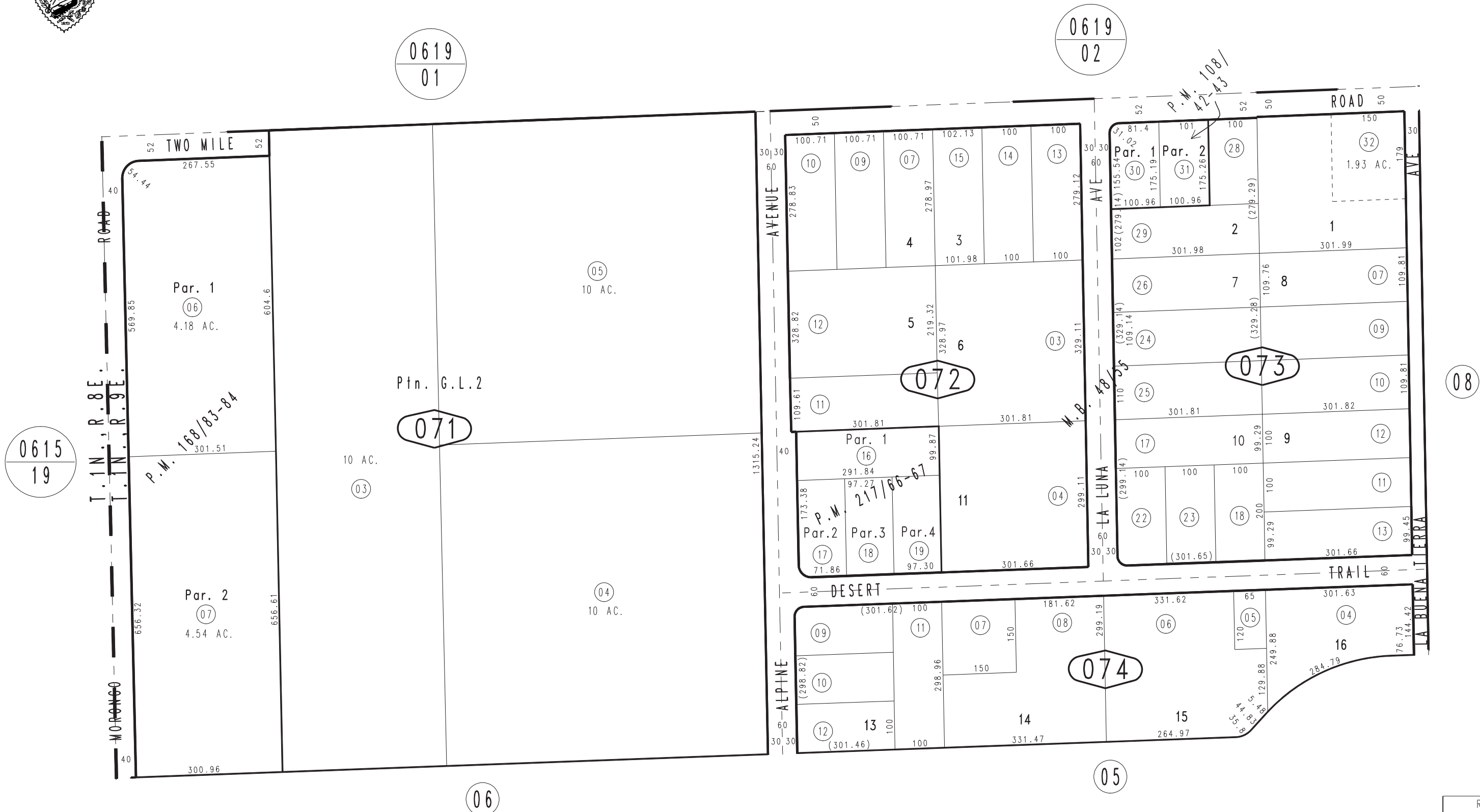


THIS MAP IS FOR THE PURPOSE OF AD VALOREM TAXATION ONLY.

N.W.1/4, N.W.1/4 Fractional Sec.30, T.1N.,R.9E., S.B.B.&M. Tract No. 3439, M.B. 48/55

City of Twentynine Palms Tax Rate Area 19015

0618 - 07



0615
19

0619
01

0619
02

071

072

073

074

06

05

08

Parcel Map No. 17397, P.M. 217/66-67
Parcel Map No. 13685, P.M. 168/83-84
Parcel Map No. 10024, P.M. 108/42-43

February 2005

Assessor's Map
Book 0618 Page 07
San Bernardino County

REVISED
11/09/23 XM