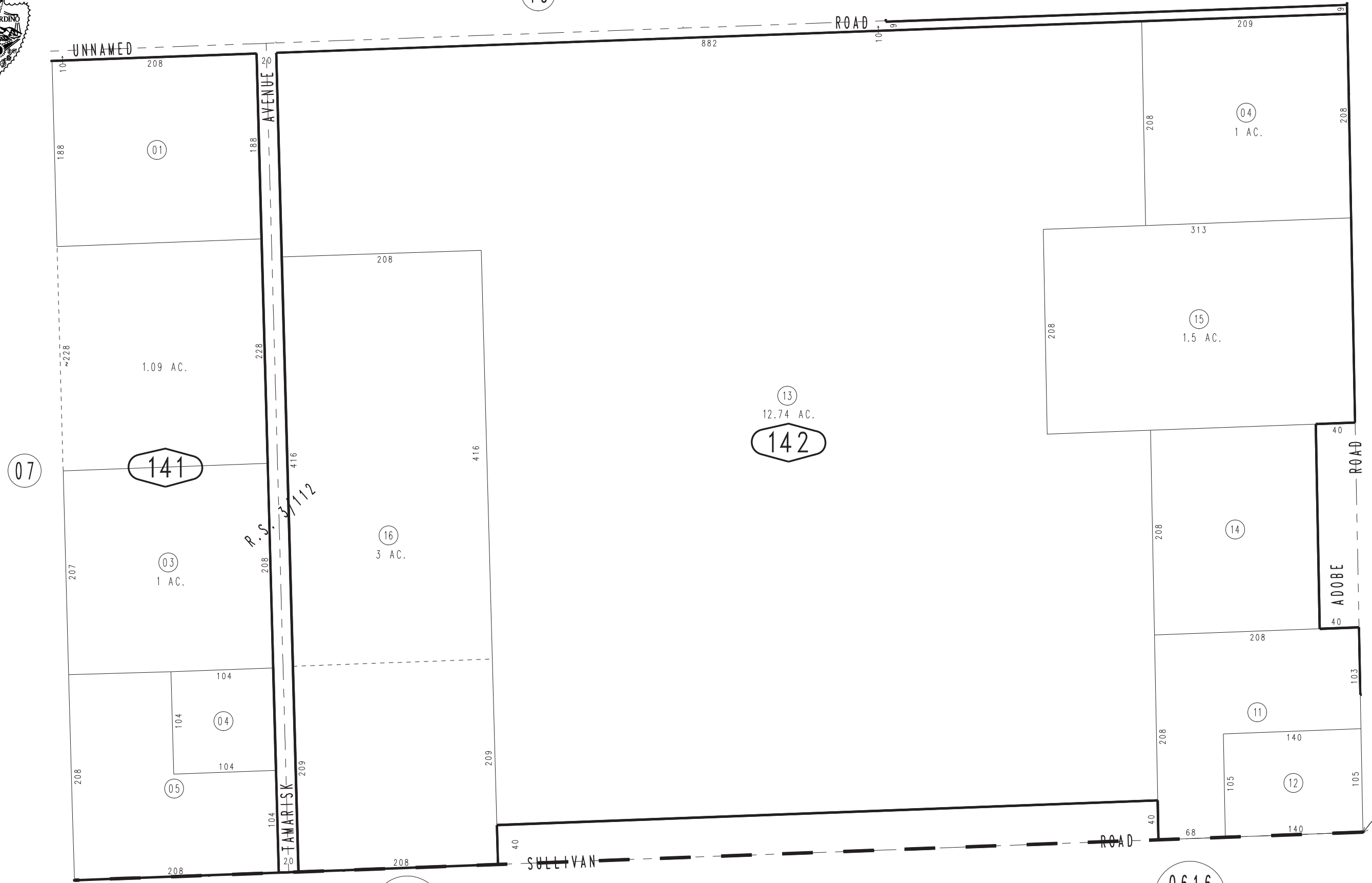


THIS MAP IS FOR THE PURPOSE
OF AD VALOREM TAXATION ONLY.

Portion S.1/2, N.E.1/4 Sec.32, T.1N.,R.9E., S.B.B.&M.
R.S. 3/112 & 3/62

City of Twentynine Palms 0617 - 14
Tax Rate Area
19015



0616
27

Assessor's Map
Book 0617 Page 14
San Bernardino County

0616
28

REVISED
03/05/20 KC