

THIS MAP IS FOR THE PURPOSE
OF AD VALOREM TAXATION ONLY.

Portion Grande Vista Heights Tract No. 3374
M.B. 54/9
R.S. 3/98 & 3/62

City of Twentynine Palms
Tax Rate Area
19015

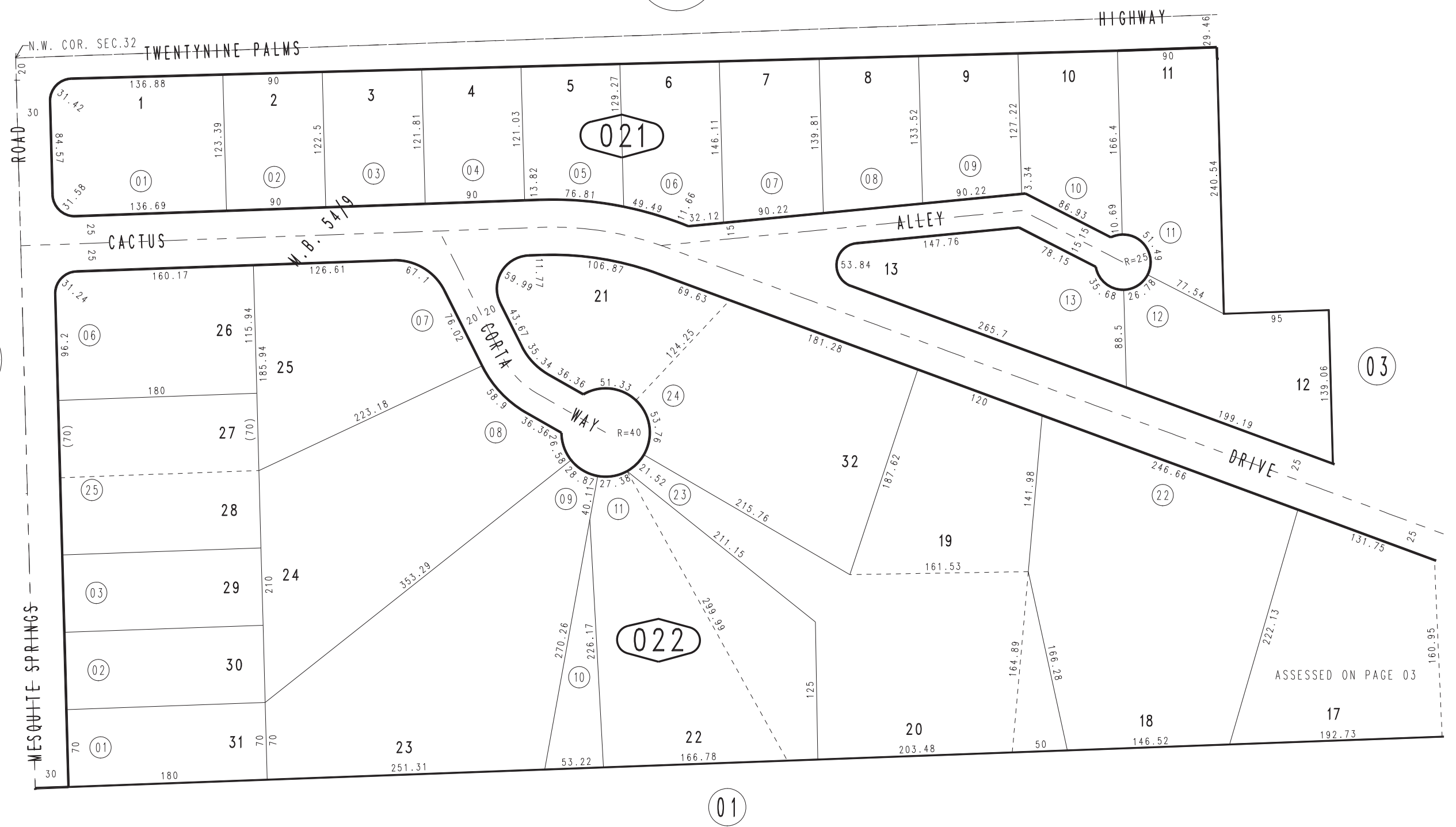
0617 - 02



0618
16



0616
13



ASSESSED ON PAGE 03