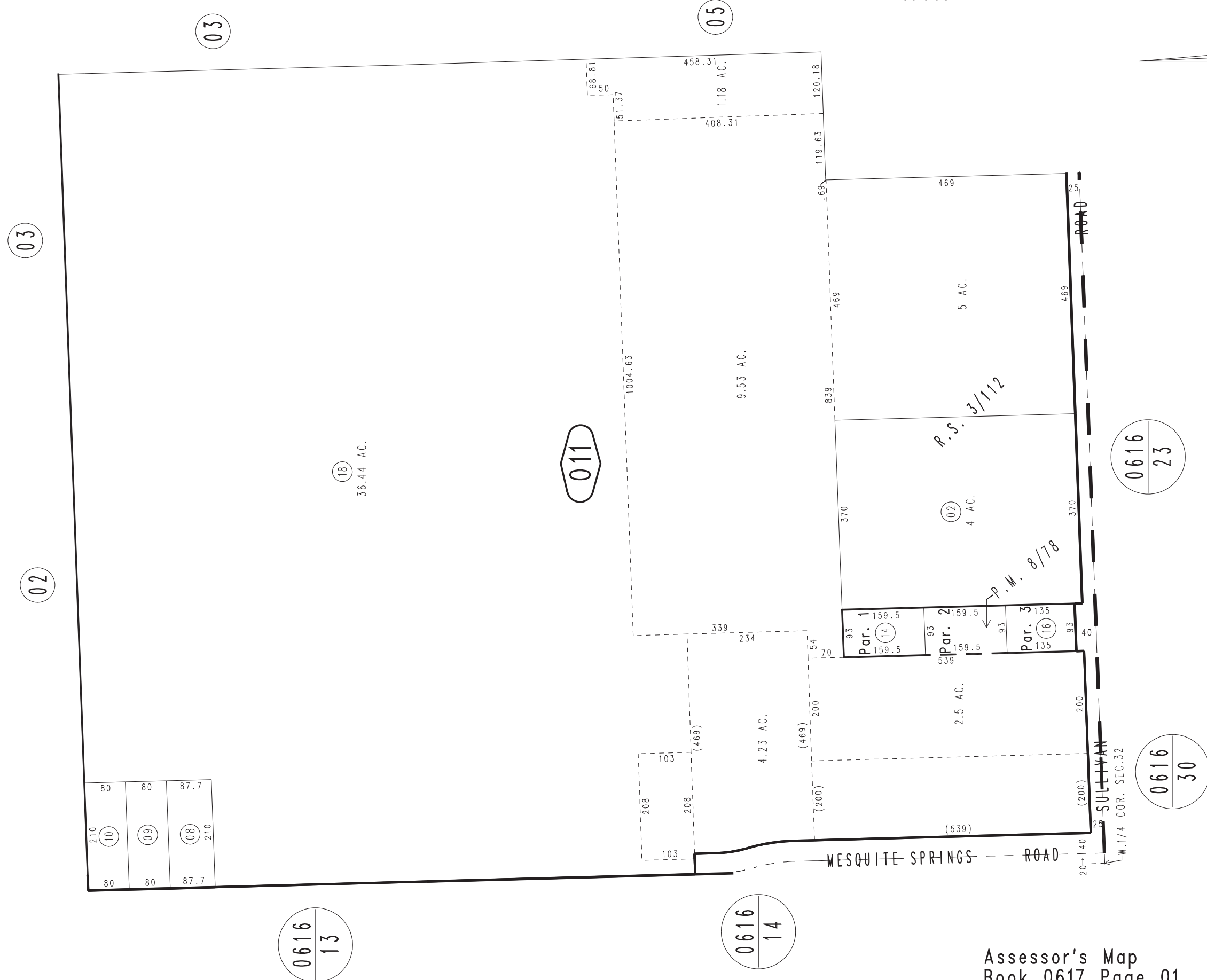
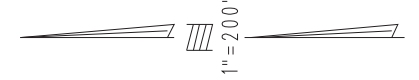


THIS MAP IS FOR THE PURPOSE
OF AD VALOREM TAXATION ONLY.

Portion N.W.1/4 Sec.32, T.1N.,R.9E., S.B.B.&M.
R.S. 3/112 & 3/62

City of Twentynine Palms
Tax Rate Area
19015

0617 - 01



210	80	80	87.7
(10)	(09)	(08)	(07)
210	80	80	87.7

0616 / 13

0616 / 14

0616 / 23

0616 / 30