

THIS MAP IS FOR THE PURPOSE OF AD VALOREM TAXATION ONLY.

Ptn. N.E.1/4, S.E.1/4, Sec.32, T.1N.,R.9E., S.B.B.&M.

City of Twentynine Palms 0616 - 28
Tax Rate Area
19001



0617
16

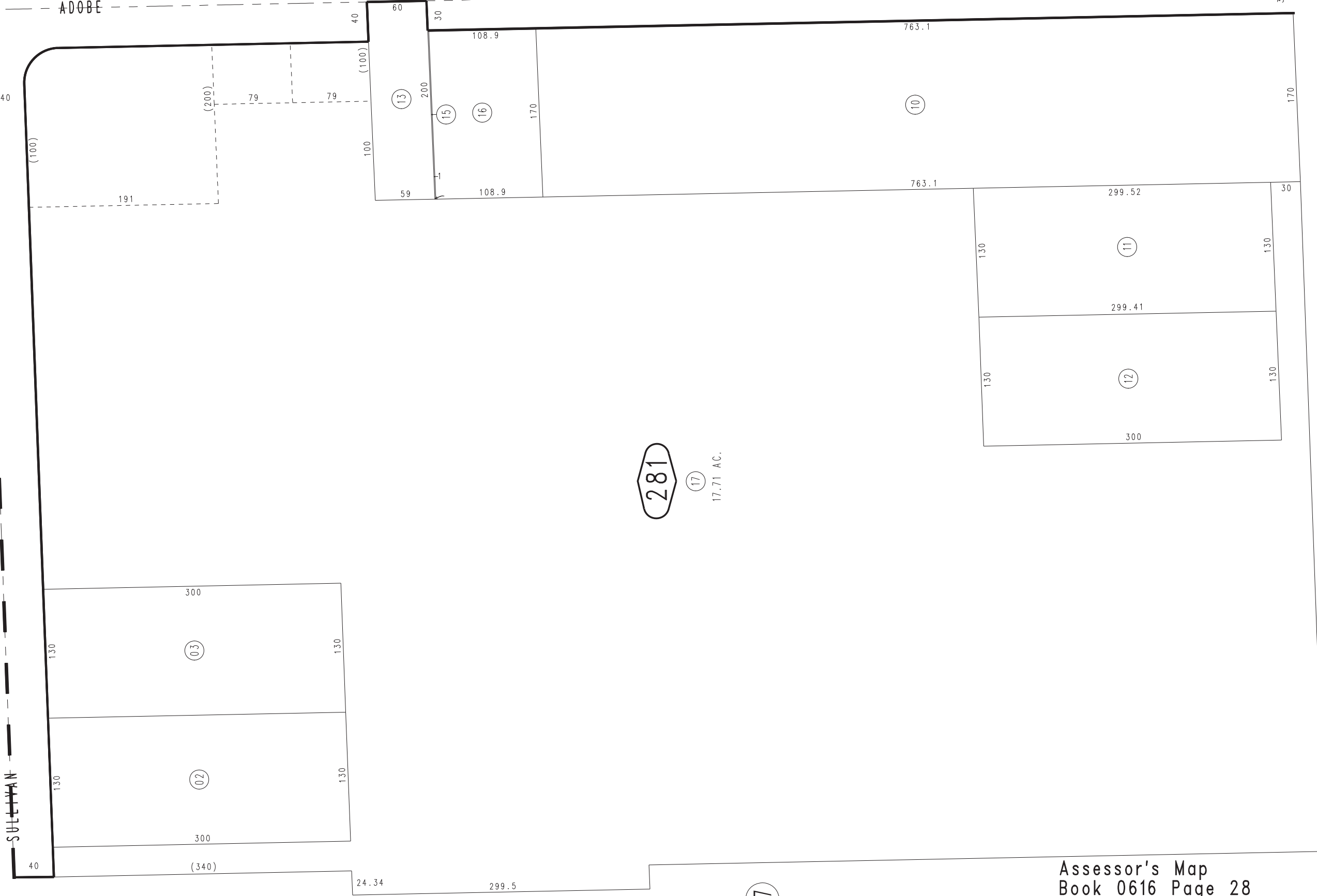


E. 1/4 COR. SEC. 32
ROAD

ADOBE

ROAD

0617
14



March 2005

Assessor's Map
Book 0616 Page 28
San Bernardino County

REVISED
03/21/13 LH
11/21/13 RU