

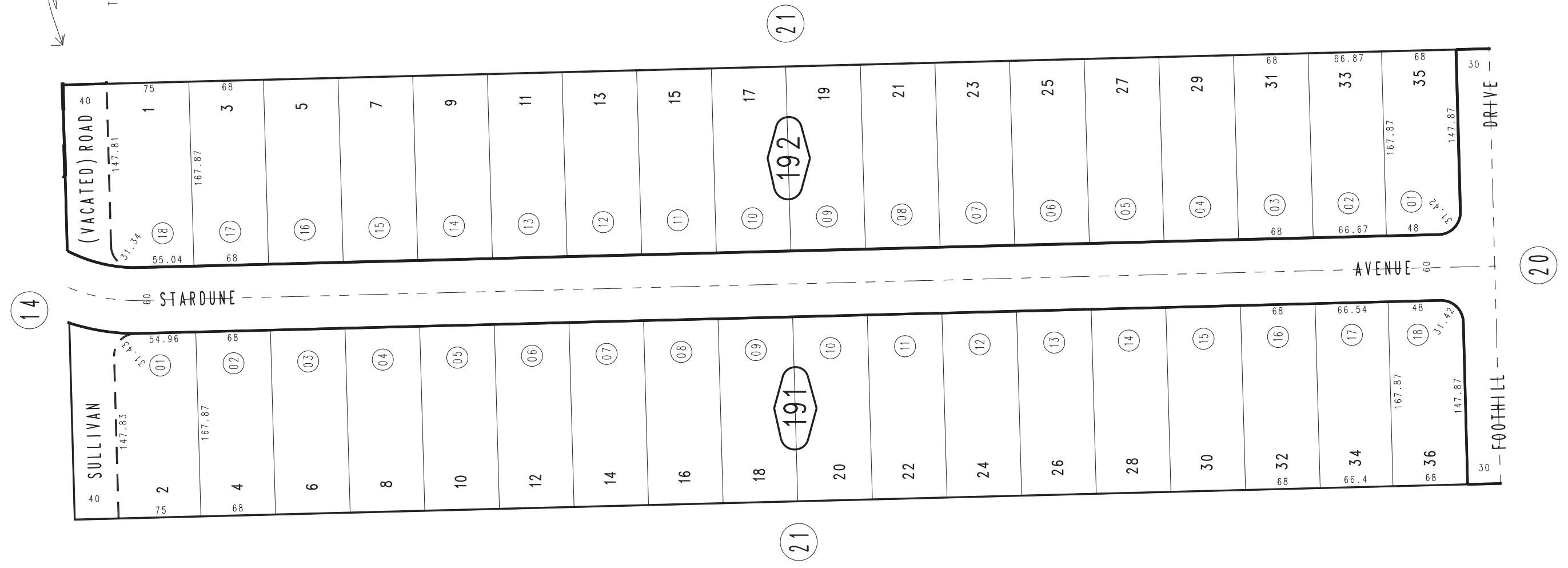
THIS MAP IS FOR THE PURPOSE
OF AD VALOREM TAXATION ONLY.

Ptn. Tract No. 4657, M.B. 57/72

City of Twentynine Palms 0616 - 19
Tax Rate Area
19001



~660'
E. 1/4 COR. SEC. 31
T. 1N., R. 9E., S.B.B. & M.



REVISED