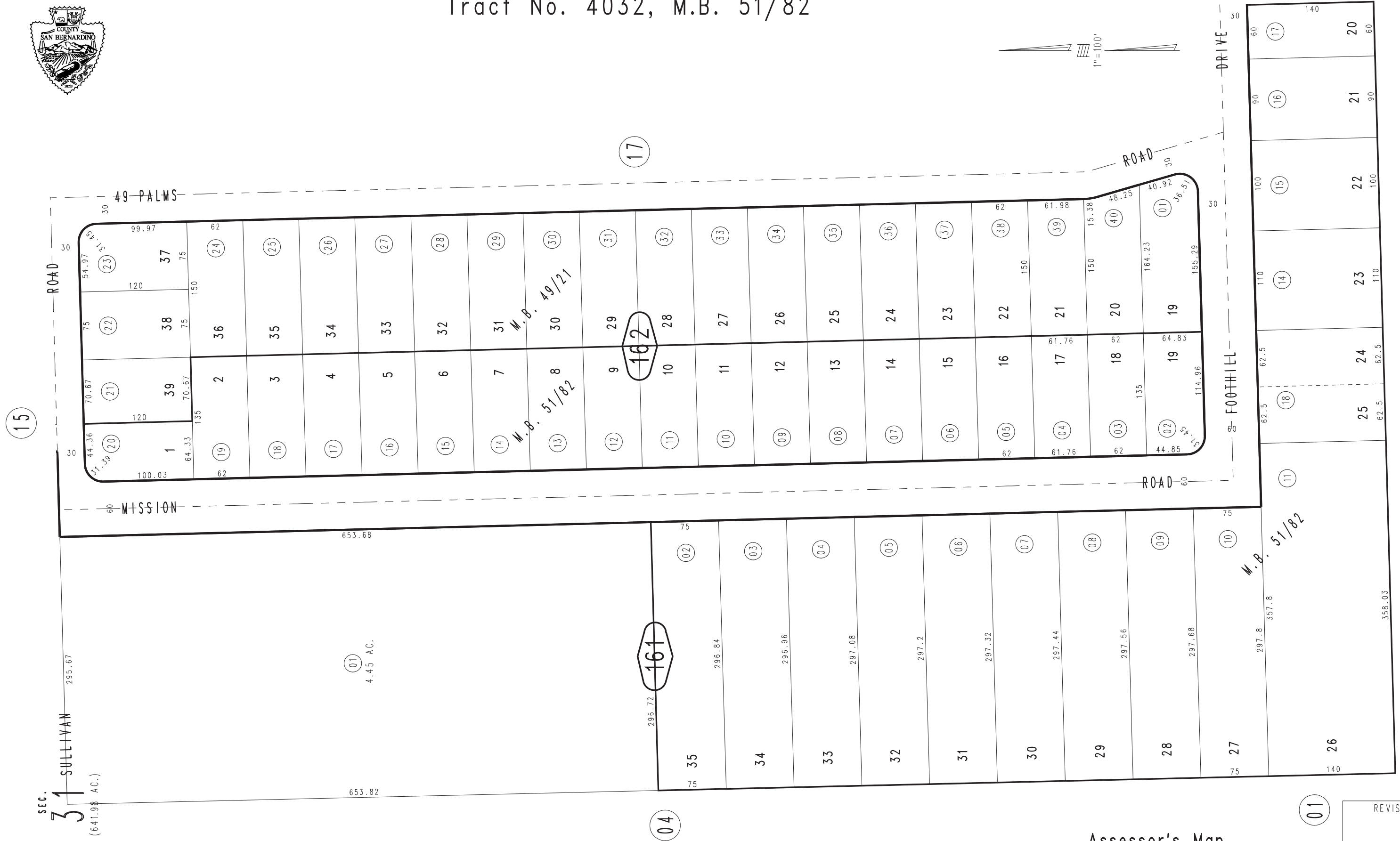


THIS MAP IS FOR THE PURPOSE OF AD VALOREM TAXATION ONLY.



Ptn. N.W.1/4, S.E.1/4, Fractional Sec.31, T.1N.,R.9E., S.B.B.&M. City of Twentynine Palms 0616 - 16  
Ptn. Tract No. 3799, M.B. 49/21 Tax Rate Area 19001  
Tract No. 4032, M.B. 51/82



March 2005

Assessor's Map  
Book 0616 Page 16  
San Bernardino County

REVISED