

THIS MAP IS FOR THE PURPOSE OF AD VALOREM TAXATION ONLY.

Ptn. N.W.1/4, N.E.1/4, Fractional Sec.31, T.1N.,R.9E., S.B.B.&M. City of Twentynine Palms 0616 - 10 Tax Rate Area 19015

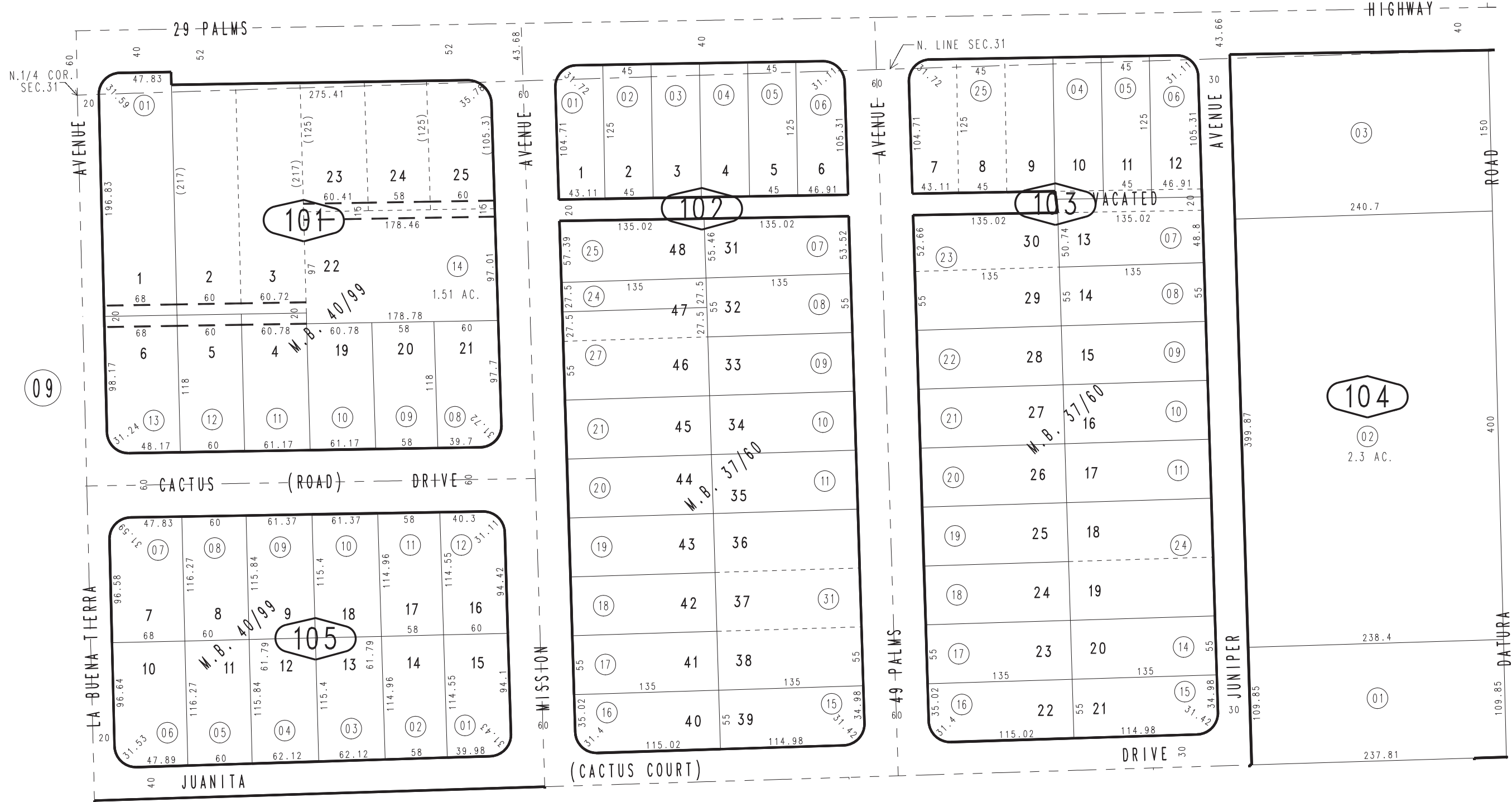


0618
15

0618
14



1"=100'



March 2005

Tract No. 2941, M.B. 40/99
Tract No. 2630, M.B. 37/60

Assessor's Map
Book 0616 Page 10
San Bernardino County

REVISED
12/09/16 KC