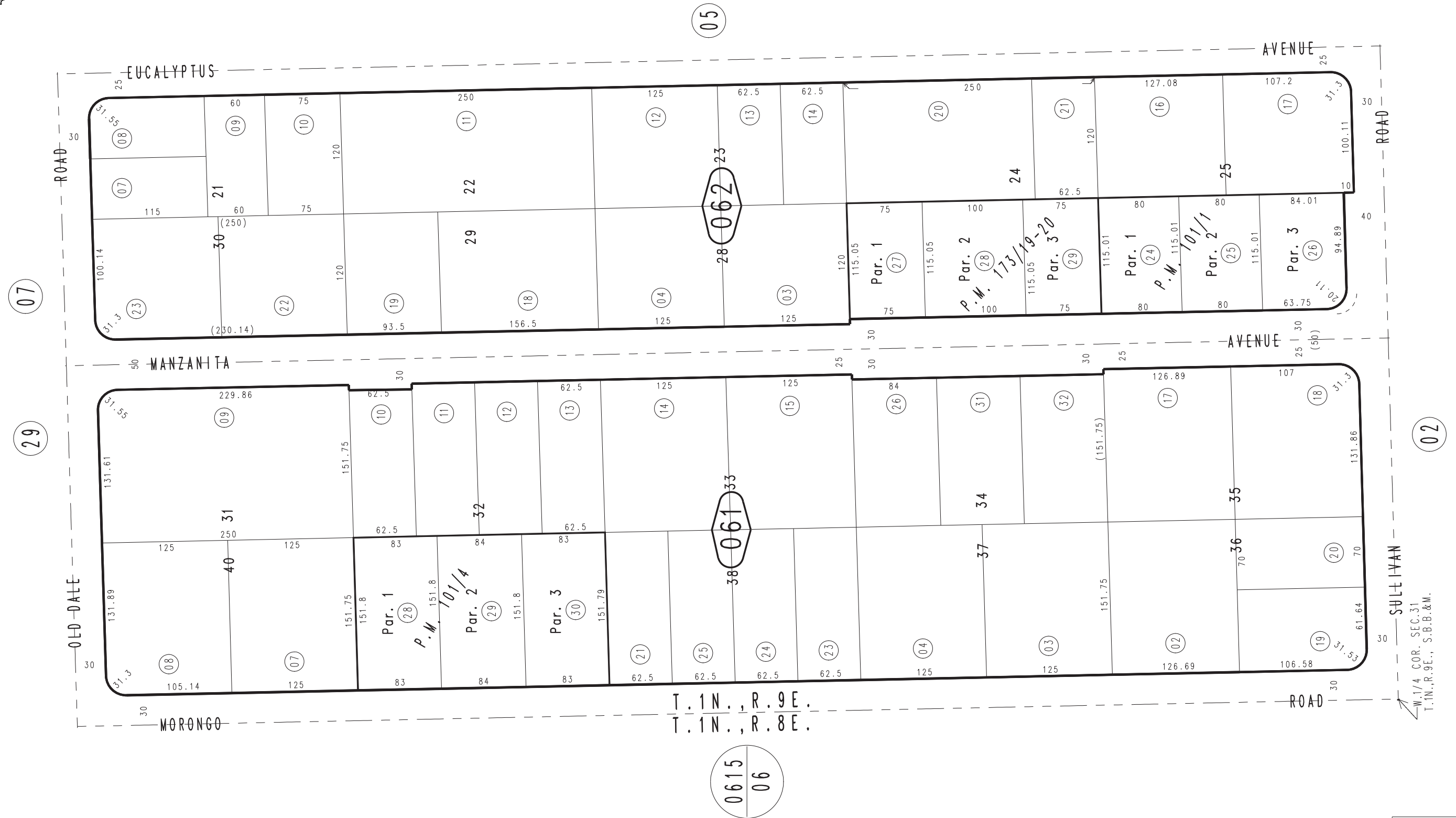
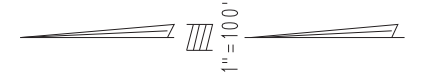


THIS MAP IS FOR THE PURPOSE OF AD VALOREM TAXATION ONLY.

Ptn. Tract No. 2654, M.B. 37/61-62

City of Twentynine Palms 0616 - 06
Tax Rate Area
19001



March 2005

Parcel Map No. 14574, P.M. 173/19-20
Parcel Map No. 9227, P.M. 101/4
Parcel Map No. 9228, P.M. 101/1

Assessor's Map
Book 0616 Page 06
San Bernardino County

REVISED
02/26/10 GW