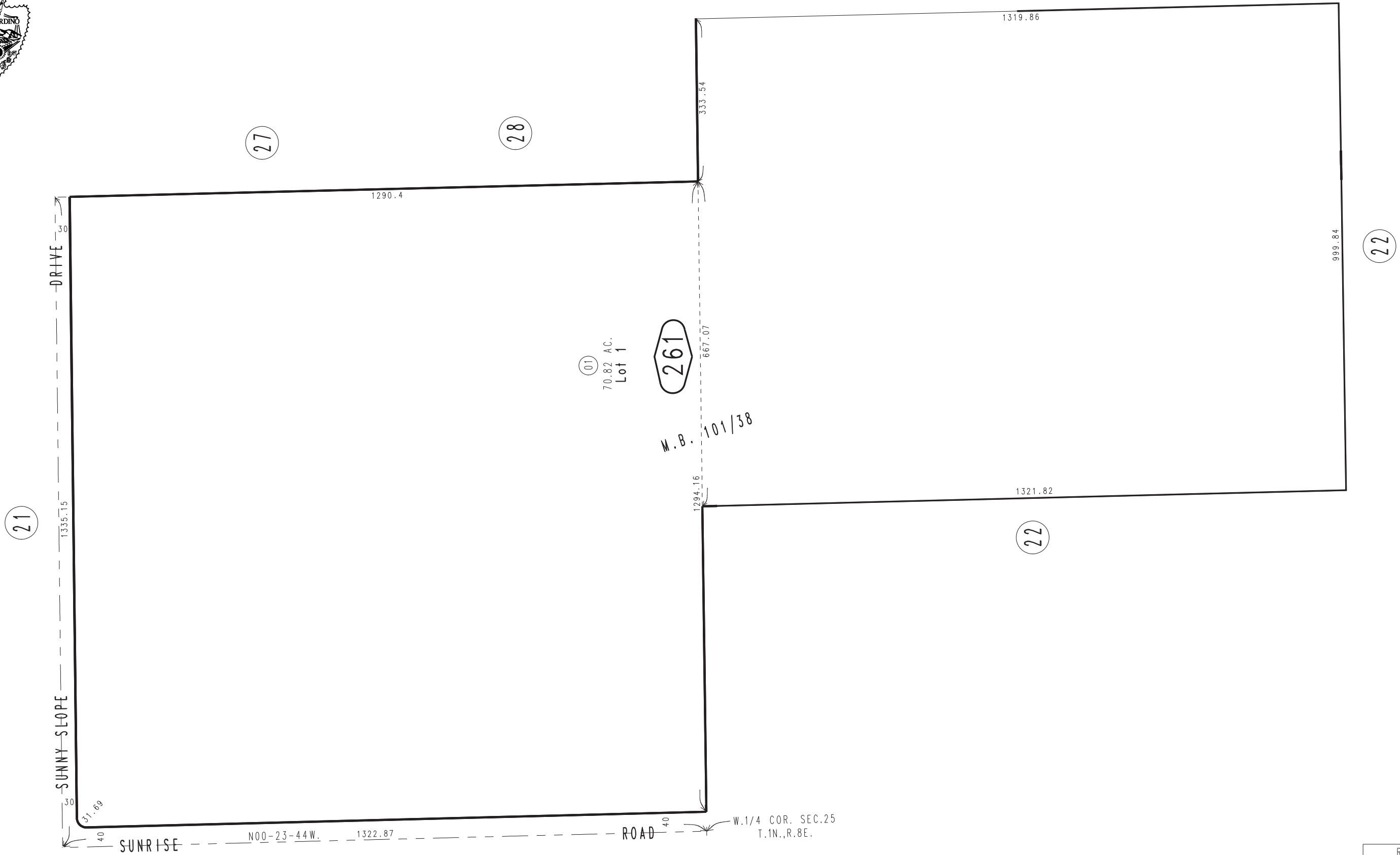


THIS MAP IS FOR THE PURPOSE
OF AD VALOREM TAXATION ONLY.

Tract No. 7903, M.B. 101/38

City of Twentynine Palms 0615 - 26
Tax Rate Area
19001



0614
32

Ptn. N.1/2, Sec. 25
T.1N., R.8E.

Assessor's Map
Book 0615 Page 26
San Bernardino County