

THIS MAP IS FOR THE PURPOSE OF AD VALOREM TAXATION ONLY.

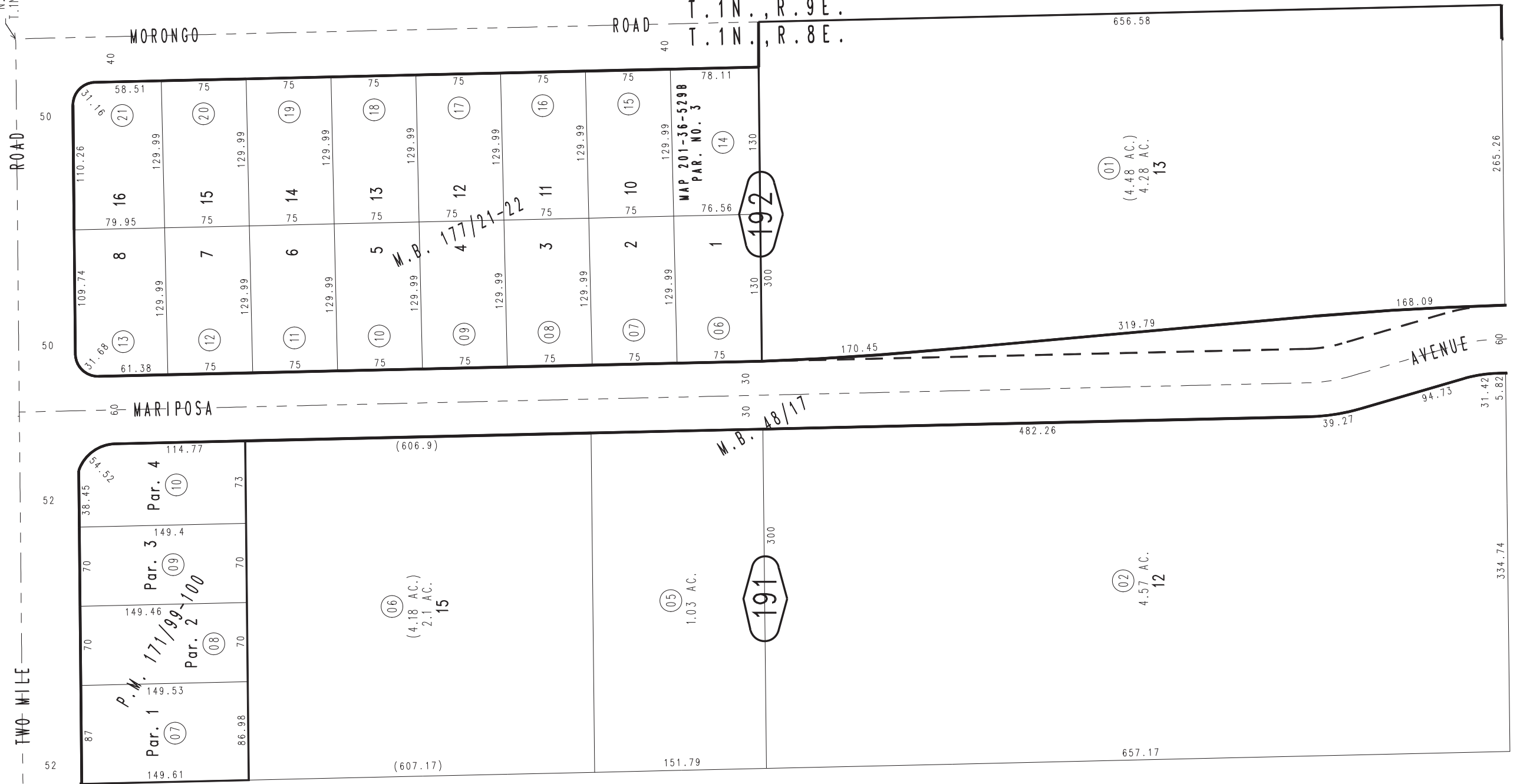


Ptn. Tract No. 3673, M.B. 48/17

City of Twentynine Palms 0615 - 19
Tax Rate Area
19001



N.E. COR. SEC. 25
T. 1N., R. 8E., S.B.B. & M.



0612
31

0618
07

191

20

18