

THIS MAP IS FOR THE PURPOSE OF AD VALOREM TAXATION ONLY.



Ptn. N.E.1/4, N.E.1/4, Fractional Sec.36, T.1N.,R.8E., S.B.B.&M.
Ptn. Tract No. 2687, M.B. 37/108

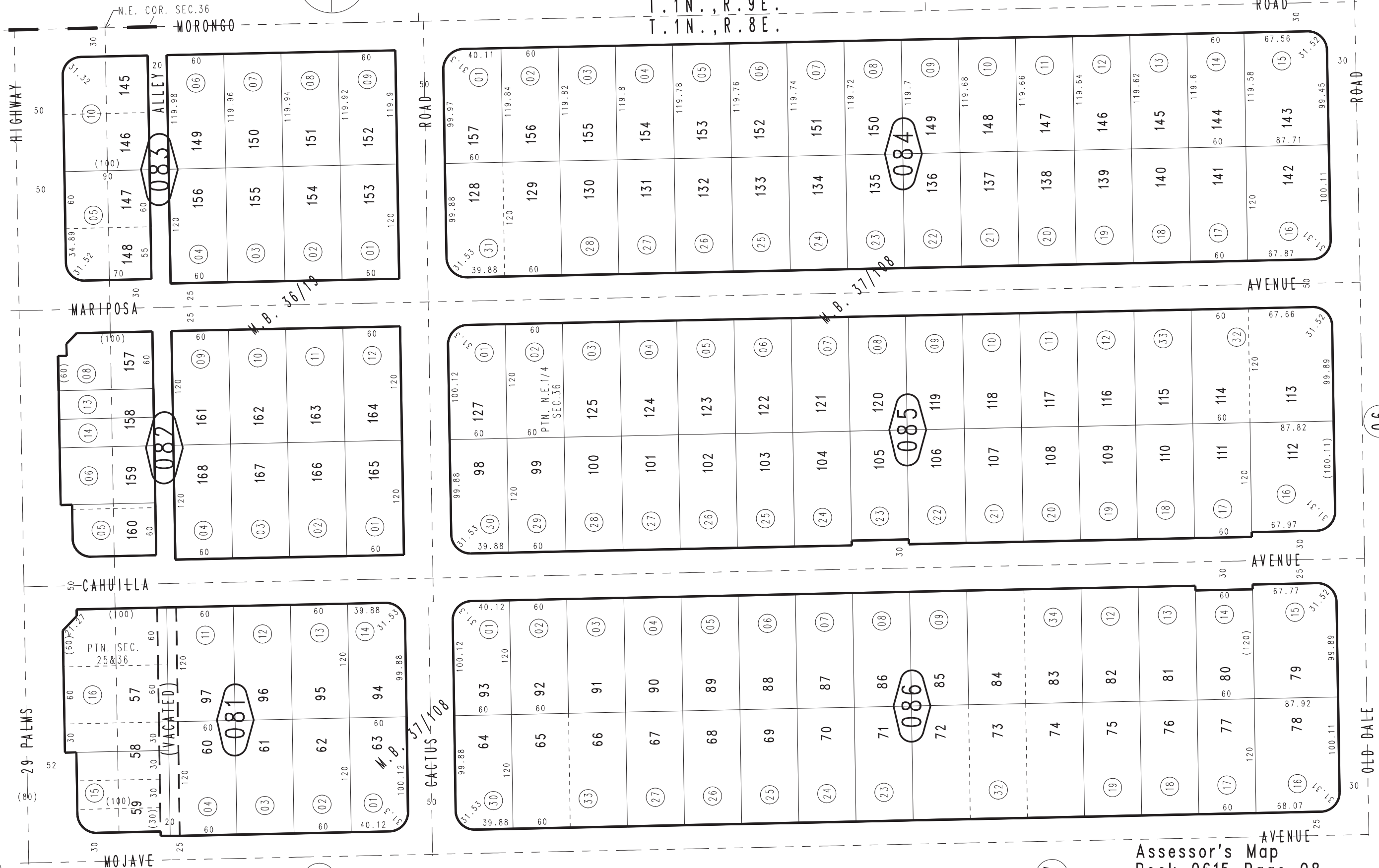
City of Twentynine Palms 0615 - 08
Tax Rate Area 19001

0616
29

0616
29



T. 1N., R. 9E.
T. 1N., R. 8E.



10

06

09

07

07

REVISED 03/01/22 RU