

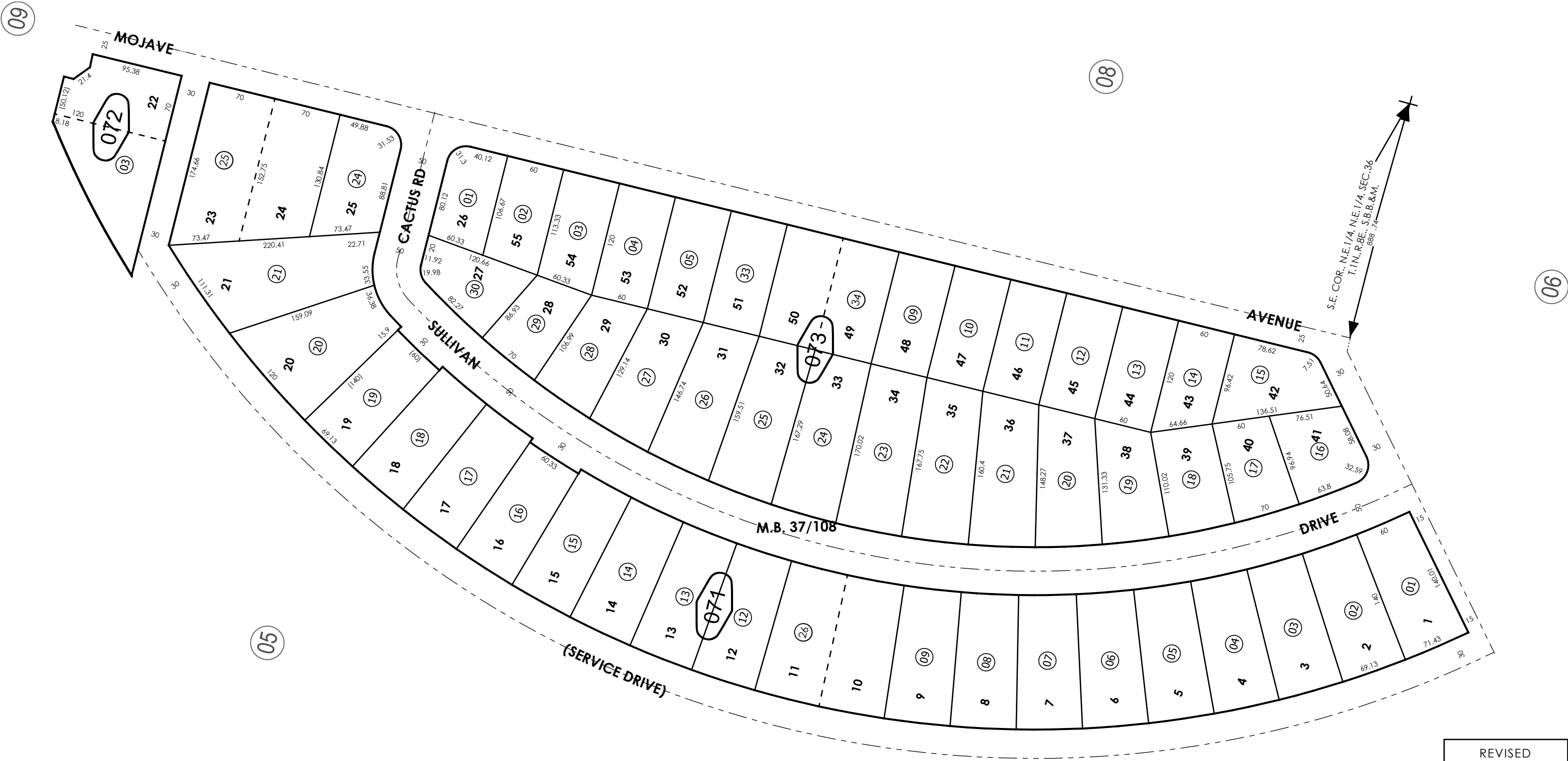
THIS MAP IS FOR THE PURPOSE  
OF AD VALOREM TAXATION ONLY.



Ptn. Tract No. 2687, M.B. 37/108

City of Twentynine Palms  
Tax Rate Area  
19001

0615 - 07



REVISED  
06/09/25 KC  
07/25/25 CA

Ptn. N.E.1/4, Sec. 36  
T.1N., R.8E.  
Assessor's Map  
Book 0615 Page 07  
San Bernardino County