

THIS MAP IS FOR THE PURPOSE  
OF AD VALOREM TAXATION ONLY.

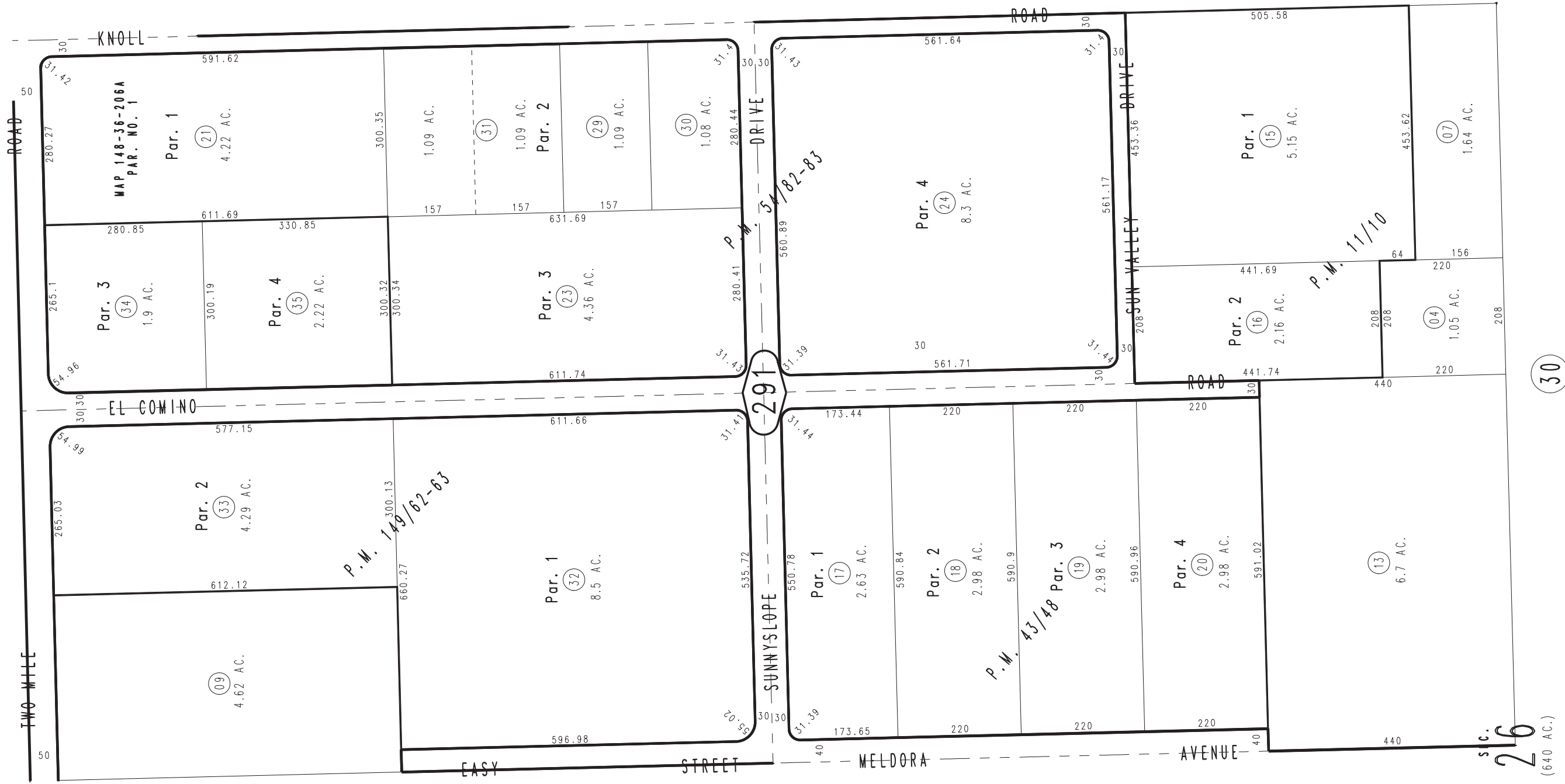
W.1/2, N.E.1/4, Sec.26, T.1N.,R.8E., S.B.B.&M.

City of Twentynine Palms  
Tax Rate Area  
19001

0614 - 29



0612  
20



Parcel Map No. 12968, P.M. 149/62-63  
 Parcel Map No. 5233, P.M. 54/82-83  
 Parcel Map No. 4386, P.M. 43/48  
 Parcel Map No. 1020, P.M. 11/10

February 2005

Assessor's Map  
 Book 0614 Page 29  
 San Bernardino County

REVISED  
 05/09/13 LH-MC